



Museum cabinet for living

A new addition to the museum cabinet for private collection series, first introduced in 2015, this piece is designed to beautifully showcase curated items, much like collection cases in art galleries and museums.

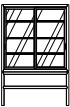
With its richly textured solid wood top and side panels, the design achieves a refined simplicity—free from excess ornamentation yet striking in presence. The sliding glass doors at the back gently define the space while allowing light and reflections to interact with the stored items.

Carefully rebalanced proportions give the cabinet a sharper, more sophisticated silhouette, making it a natural complement to contemporary living spaces.



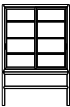
Museum cabinet for living

TIME & STYLE



C-516G Cabinet
W1200×D450×H1800

C-516D Drawer
W488×D358×H229

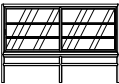


C-516W Cabinet
W1200×D450×H1800

C-516D Drawer
W488×D358×H229

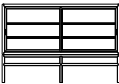
W (width)
D (depth)
H (height)

Dimensions Unit: mm



C-517G Cabinet
W2100×D450×H1400

C-517D Drawer
W950×D354×H238



C-517W Cabinet
W2100×D450×H1400

C-517D Drawer
W950×D354×H238



Oak
Natural white



Oak
Snow white



Oak
Medium grey



Oak
Charcoal grey



Oak
Beeswax



Oak
Tannin black



Glass
Clear