



Kasama Table

In Time & Style's collection of tableware, there is a Kasama ceramic serving board. The Kasama Table was born from the idea of creating a larger version of this design to impart a new sense of presence. Using the traditional tatara technique, in which clay is cut into slabs and assembled, the table is shaped with legs attached to the top. Its size was carefully determined to fit the largest dimensions that can be placed in the kiln. Due to this size, the top is prone to slight warping during firing, so multiple supports are used to maintain its shape inside the kiln.

The Kasama Table can be used in many ways—stacked as a second layer on a dining or low table, placed directly on tatami mats, or adapted to any number of creative uses. It is also suitable for bathrooms and outdoor spaces. The pottery's refined glaze softly enhances any interior, bringing a quiet elegance to the space.



Kasama Table



TSKZ011 Side table
W380×D380×H80



TSKZ013 Side table
W670×D380×H40

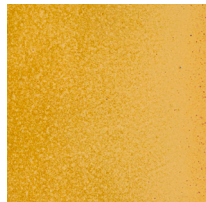
TIME & STYLE

W (width)
D (depth)
H (height)

Dimensions Unit: mm



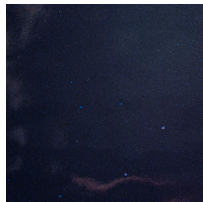
Ceramic
Kohiki



Ceramic
Irabo



Ceramic
Oribe



Ceramic
Ruri