



PE

Designed by Kengo Kuma

Designed by Kengo Kuma, the PE table is a simple table made only with steel or stainless. By minimizing the number of parts, the size of the tabletop and base was determined to efficiently use the materials. Care was also taken for the back of the top board to give it a beautiful appearance.

The surface is finished with a black oxide coating to convey the solid feel of the material. The black oxide coating allows us to express iron's natural scratches, colour unevenness, subtle dents, and other senses of the material that tend to be hidden by pigment finishes. Its rustic, rugged appearance emits a mysterious charm.

PE

Designed by Kengo Kuma



KK-T501 cafe table
 ϕ 700×H730



KK-T601 side table
 ϕ 450×H420

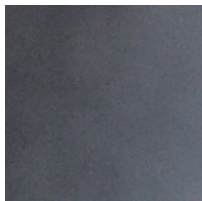
TIME & STYLE

ϕ (diameter)
H (height)

Dimensions Unit: mm



Stainless
Vibration finish



Steel
Black oxide coated