



KA

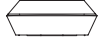
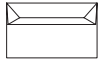
Designed by Kengo Kuma

KA sofa was designed for a project by Kengo Kuma. It is indeed a product very closely related to the architecture designed by this architect. His architecture rarely has flat, horizontal ceilings and walls. KA sofa, consists entirely of angled surfaces besides the seating surface in line with his architectural design.

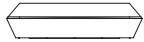
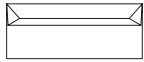
While maintaining the sharpness of the end shape, one of the challenges was to combine a contradictory element of the cushioned surface needed for sofas. The sofa is reminiscent of a sculpture with a trigonal pyramid floating in the air.

KA

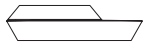
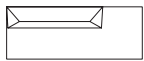
Designed by Kengo Kuma



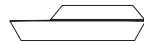
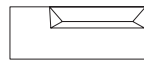
KK-S102 2 seater sofa
W1600×D925×H620×SH365



KK-S103 3 seater sofa
W2400×D925×H620×SH365



KK-S104L couch ship
W2400×D925×H620×SH365



KK-S104R couch ship
W2400×D925×H620×SH365

TIME & STYLE

W (width)
D (depth)
H (height)
SH (seat height)

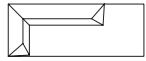
Dimensions Unit: mm

F1 (Fabric rank 1)
F2 (Fabric rank 2)
L1 (Leather rank 1)
L2 (Leather rank 2)

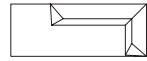
KA

Designed by Kengo Kuma

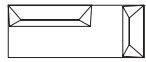
TIME & STYLE



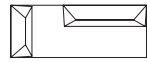
KK-S105L corner sofa
W2400×D925×H620×SH365



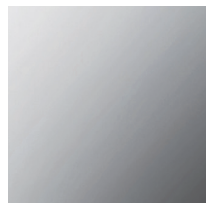
KK-S105R corner sofa
W2400×D925×H620×SH365



KK-S106L couch island
W2400×D925×H620×SH365



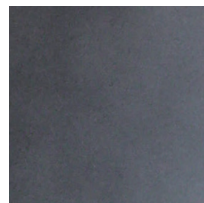
KK-S106R couch island
W2400×D925×H620×SH365



Stainless
Mirror finish



Stainless
Vibration finish



Steel
Black oxide coated

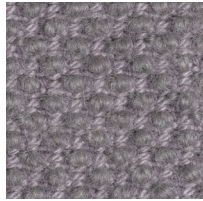
New Fabrics



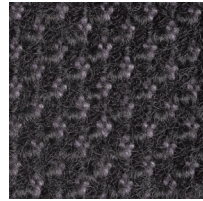
Shizuku (F2) KO1001



Shizuku (F2) KO1002



Shizuku (F2) KO1003



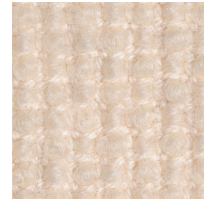
Shizuku (F2) KO1004



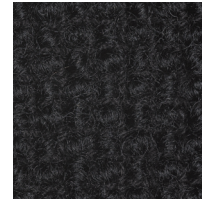
Shizuku (F2) KO1005



Shizuku (F2) KO1006



Migiwa (F2) KO2001



Migiwa (F2) KO2002



Migiwa (F2) KO2003



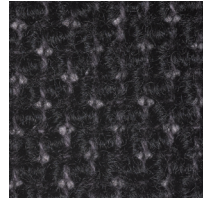
Migiwa (F2) KO2004



Migiwa (F2) KO2005



Migiwa (F2) KO2006



Migiwa (F2) KO2007



Migiwa (F2) KO2008



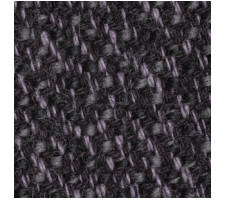
Migiwa (F2) KO2009



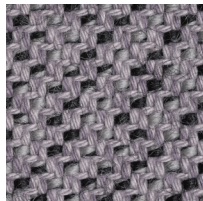
Migiwa (F2) KO2010



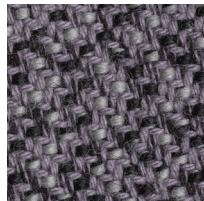
Mikage (F2) KO4001



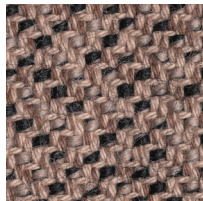
Mikage (F2) KO4002



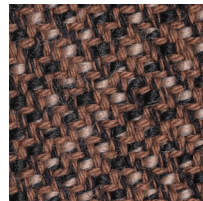
Mikage (F2) KO4003



Mikage (F2) KO4011

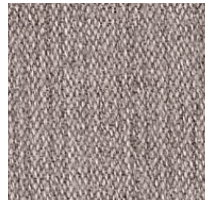


Mikage (F2) KO4005

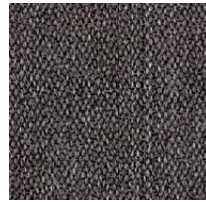


Mikage (F2) KO4006

Fabrics



Riff (F1) 13/08



Riff (F1) 12/80



Riff (F1) 07/78



Riff (F1) 05/99



Riff (F1) 06/77



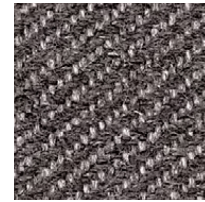
Bergen (F1) 05/09



Bergen (F1) 03/07



Bergen (F1) 10/84



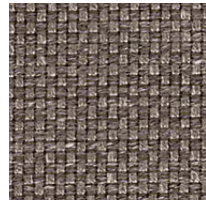
Bergen (F1) 09/86



Bergen (F1) 02/77



Strand (F1) 00



Strand (F1) 75



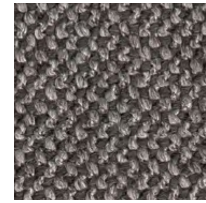
Strand (F1) 77



Ruig (F1) 02



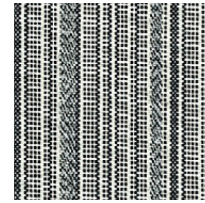
Ruig (F1) 71



Ruig (F1) 78



Ruig (F1) 88



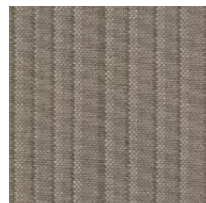
Kokura Stripe(F1) 1037



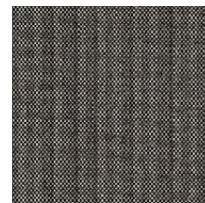
Kokura Stripe (F1) 1036



Kokura Stripe (F1) 1035



Kokura Stripe (F1) 1034



Kokura Stripe (F1) 1033



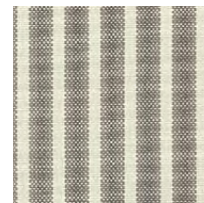
Kokura Stripe (F1) 1032



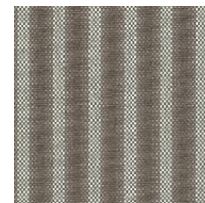
Kokura Stripe (F1) 1031



Kokura Stripe (F1) 1030



Kokura Stripe (F1) 1039



Kokura Stripe (F1) 1038



Katsuragi white (F1)



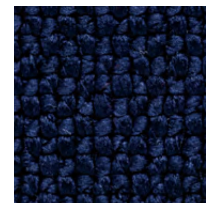
Bolster (F2) 09



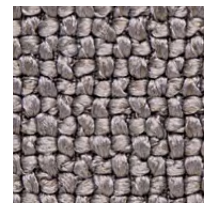
Bolster (F2) 75



Bolster (F2) 77



Bolster (F2) 44

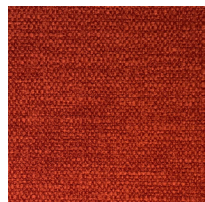


Bolster (F2) 80

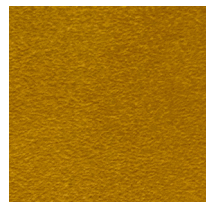


Bolster (F2) 88

Special order



Red



Orange



Yellow



Green



Green 2



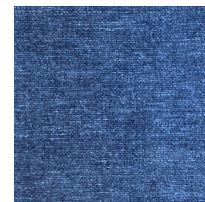
Green 3



Blue 1



Blue 2



Blue 3

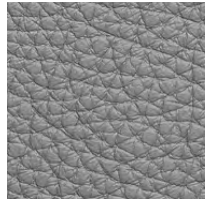
Embossed leather (L1)



40202



40242



40243



40204



40205



40206



40209



40210



40215

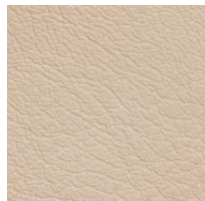


40216

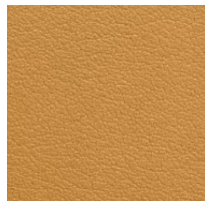
Smooth leather (L2)



40110



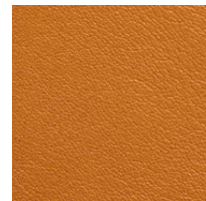
40109



40106



40108



40105



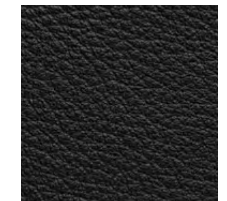
40104



40103



40107



40102



40101