

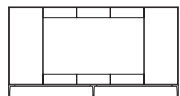


### Composition system cabinet

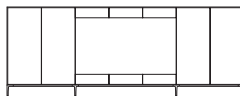
We struggled to find the ideal design for a cabinet that would be able to house an entire television while beautifully integrating the space for the television and storage to a space. Composition system cabinet is functionally equipped with a TV arm to enable freely adjusting the direction of the screen, achieving the overall durability to support the weight of stored items. The side storage space has movable shelf boards to store objects in any height. The brass legs create a sense of lightness, as if the entire cabinet were floating above the floor.

## Composition system cabinet

## TIME & STYLE



C-693 / C-693P TV cabinet  
W3000×D450×H1580  
(downward door×6, door×2)



C-694 / C-694P TV cabinet  
W4200×D450×H1580  
(downward door×6, door×4)

W (width)  
D (depth)  
H (height)

Dimensions Unit: mm



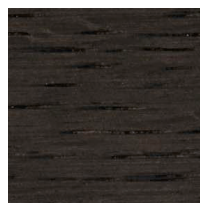
Oak  
Natural white



Oak  
Snow white



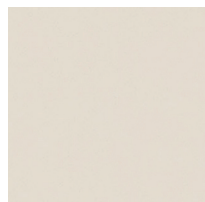
Oak  
Medium grey



Oak  
Charcoal grey



Oak  
Beeswax



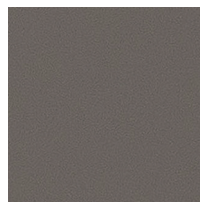
MDF  
Warm white



MDF  
Beige



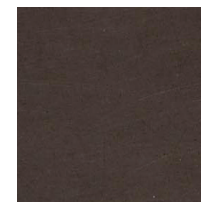
MDF  
Light grey



MDF  
Grey



Brass  
Polish



Brass  
Black stain