



a chair on the vertical axis

清水寺の檜舞台は、日本古来の伝統工法「懸造り(かけづくり)」と言う垂直と水平の格子状に組まれた木材で支えられています。この工法によって、崖のように建築が困難な場所でも耐震性を保つことが出来ます。1500年以上前から日本の寺院を支え続ける伝統工法の考え方を、椅子の構造と意匠として抽象化し、繊細な日本の木造建築のような佇まいを表現しました。



接合部分は人間の身体のように滑らかに繋がりが、無垢材を楕円形状に削り出した背板は体を優しく受け止めます。素朴で清楚な姿をした完成度の高い椅子になりました。

a chair on the vertical axis

TIME & STYLE



I-711 サイドチェア
W470×D515×H780×SH450

ブナ

F1	104,500 (95,000)
F2	110,000 (100,000)
L1	115,500 (105,000)
L2	121,000 (110,000)



I-712 アームチェア
W520×D515×H780×SH450×AH630

ブナ

F1	132,000 (120,000)
F2	137,500 (125,000)
L1	143,000 (130,000)
L2	148,500 (135,000)

W (幅)
D (奥行)
H (高さ)
SH (シート高)
AH (アーム高)

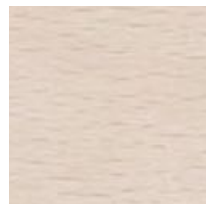
寸法単位：mm

価格は日本円
() は税抜き価格

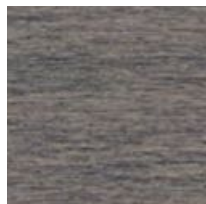
F1 (生地 ランク 1)
F2 (生地 ランク 2)
L1 (革 ランク 1)
L2 (革 ランク 2)



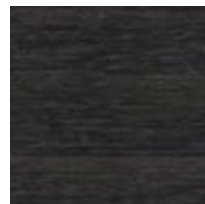
ブナ
ナチュラルホワイト



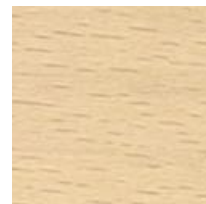
ブナ
スノーホワイト



ブナ
ミディアムグレー



ブナ
チャコールグレー



ブナ
ソープ

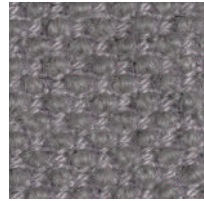
New Fabrics



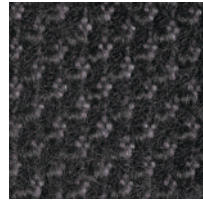
Shizuku (F2) KO1001



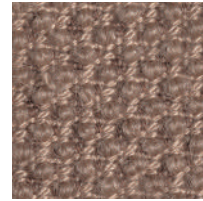
Shizuku (F2) KO1002



Shizuku (F2) KO1003



Shizuku (F2) KO1004



Shizuku (F2) KO1005



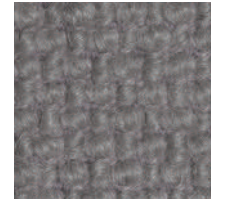
Shizuku (F2) KO1006



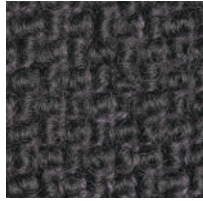
Migiwa (F2) KO2001



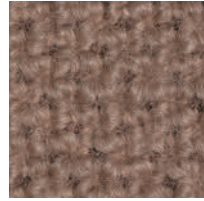
Migiwa (F2) KO2002



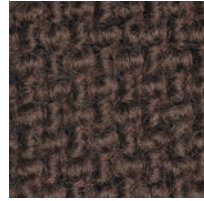
Migiwa (F2) KO2003



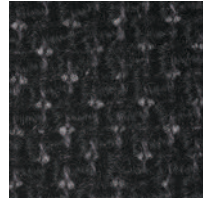
Migiwa (F2) KO2004



Migiwa (F2) KO2005



Migiwa (F2) KO2006



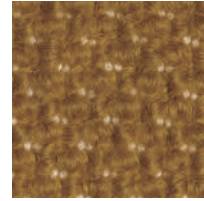
Migiwa (F2) KO2007



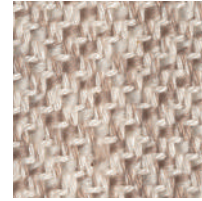
Migiwa (F2) KO2008



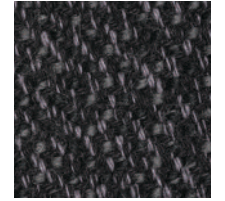
Migiwa (F2) KO2009



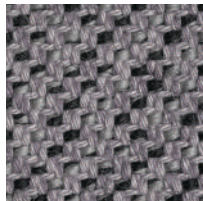
Migiwa (F2) KO2010



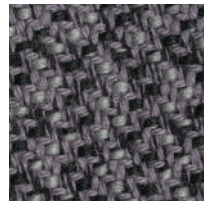
Mikage (F2) KO4001



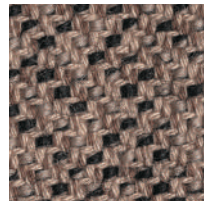
Mikage (F2) KO4002



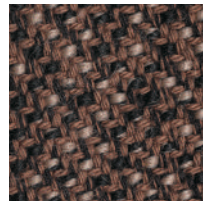
Mikage (F2) KO4003



Mikage (F2) KO4011

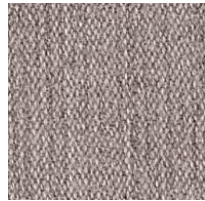


Mikage (F2) KO4005

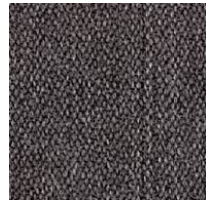


Mikage (F2) KO4006

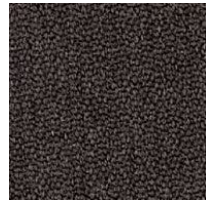
Fabrics



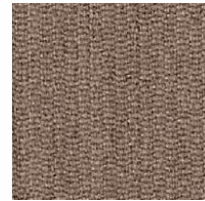
Riff (F1) 13/08



Riff (F1) 12/80



Riff (F1) 07/78



Riff (F1) 05/99



Riff (F1) 06/77



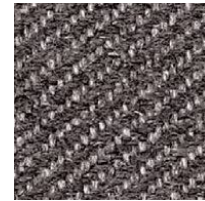
Bergen (F1) 05/09



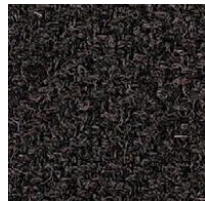
Bergen (F1) 03/07



Bergen (F1) 10/84



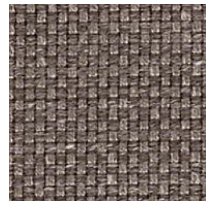
Bergen (F1) 09/86



Bergen (F1) 02/77



Strand (F1) 00



Strand (F1) 75



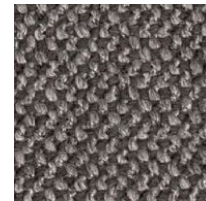
Strand (F1) 77



Ruig (F1) 02



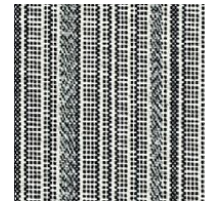
Ruig (F1) 71



Ruig (F1) 78



Ruig (F1) 88



Kokura Stripe(F1) 1037



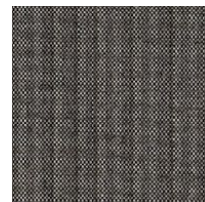
Kokura Stripe (F1) 1036



Kokura Stripe (F1) 1035



Kokura Stripe (F1) 1034



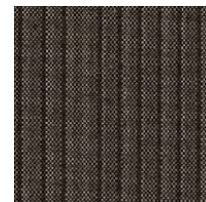
Kokura Stripe (F1) 1033



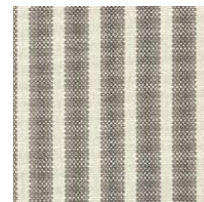
Kokura Stripe (F1) 1032



Kokura Stripe (F1) 1031



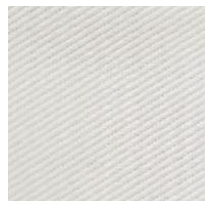
Kokura Stripe (F1) 1030



Kokura Stripe (F1) 1039



Kokura Stripe (F1) 1038



Katsuragi white (F1)



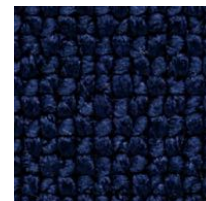
Bolster (F2) 09



Bolster (F2) 75



Bolster (F2) 77



Bolster (F2) 44



Bolster (F2) 80



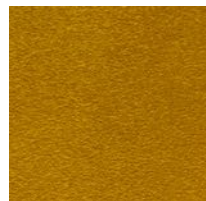
Bolster (F2) 88

Special order

機能性生地や、ラインナップ以外のカラー生地のおオーダーも承ります。



Red



Orange



Yellow



Green



Green 2



Green 3



Blue 1



Blue 2



Blue 3

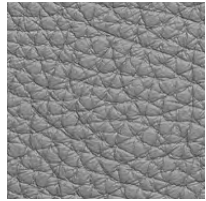
Embossed leather (L1)



40202



40242



40243



40204



40205



40206



40209



40210



40215

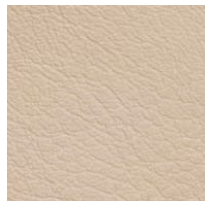


40216

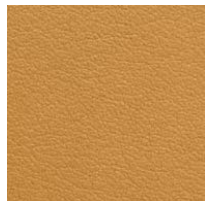
Smooth leather (L2)



40110



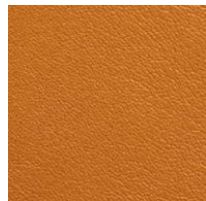
40109



40106



40108



40105



40104



40103



40107



40102



40101