



a chair on the vertical axis

The hinoki cypress stage of Kiyomizu-dera Temple employs a traditional Japanese construction method called kakezukuri, an architectural style in which a building is built on a cliff by fixing the underfloor with long pillars or piers. This chair abstracts the traditional construction method, which has supported Japanese temples for over 1500 years, as a chair structure and design. The joints where vertical and horizontal lines intersect connect flexibly as in the human body. The backrest, carved into an oval form from solid wood, creates simple and neat appearance that gently accepts a resting body.



a chair on the vertical axis



I-711 side chair
W470×D515×H780×SH450

Beech

F1 1.200
F2 1.240
L1 1.320
L2 1.360



I-712 armchair
W520×D515×H780×SH450×AH630

Beech

F1 1.400
F2 1.440
L1 1.520
L2 1.560

TIME & STYLE

W (width)
D (depth)
H (height)
SH (seat height)
AH (arm height)

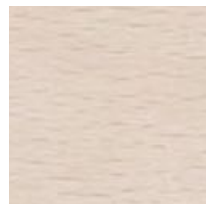
Dimensions Unit: mm

Prices in Euro
VAT not included

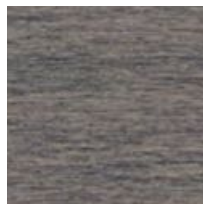
F1 (Fabric rank 1)
F2 (Fabric rank 2)
L1 (Leather rank 1)
L2 (Leather rank 2)



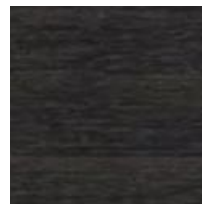
Beech
Natural white



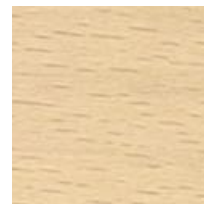
Beech
Snow white



Beech
Medium grey



Beech
Charcoal grey



Beech
Soap

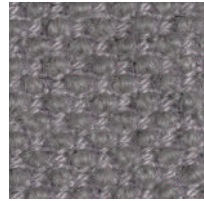
New Fabrics



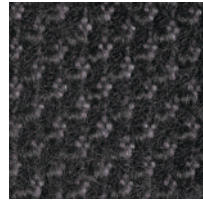
Shizuku (F2) KO1001



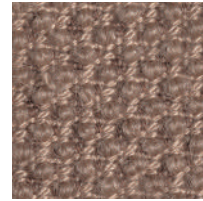
Shizuku (F2) KO1002



Shizuku (F2) KO1003



Shizuku (F2) KO1004



Shizuku (F2) KO1005



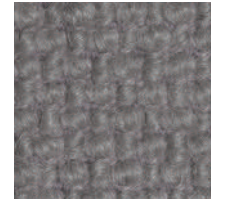
Shizuku (F2) KO1006



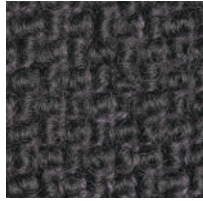
Migiwa (F2) KO2001



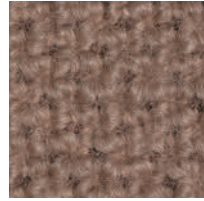
Migiwa (F2) KO2002



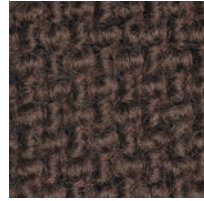
Migiwa (F2) KO2003



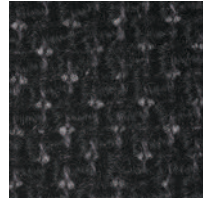
Migiwa (F2) KO2004



Migiwa (F2) KO2005



Migiwa (F2) KO2006



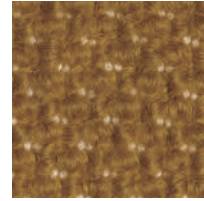
Migiwa (F2) KO2007



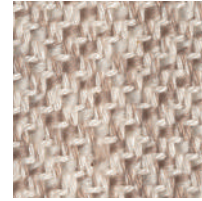
Migiwa (F2) KO2008



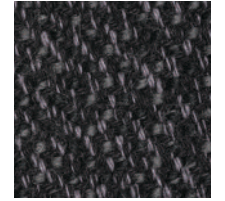
Migiwa (F2) KO2009



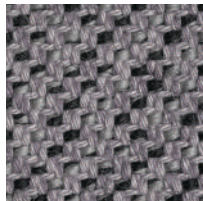
Migiwa (F2) KO2010



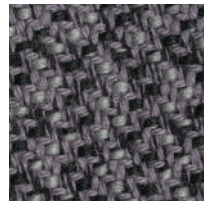
Mikage (F2) KO4001



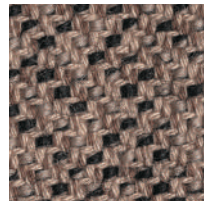
Mikage (F2) KO4002



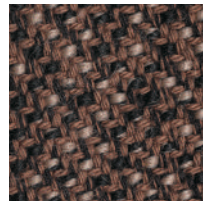
Mikage (F2) KO4003



Mikage (F2) KO4011

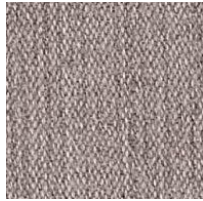


Mikage (F2) KO4005



Mikage (F2) KO4006

Fabrics



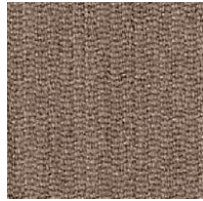
Riff (F1) 13/08



Riff (F1) 12/80



Riff (F1) 07/78



Riff (F1) 05/99



Riff (F1) 06/77



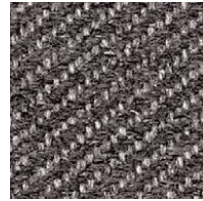
Bergen (F1) 05/09



Bergen (F1) 03/07



Bergen (F1) 10/84



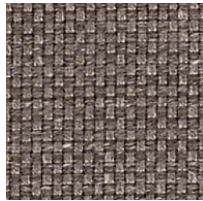
Bergen (F1) 09/86



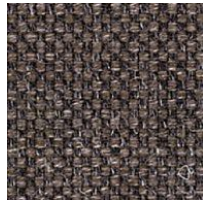
Bergen (F1) 02/77



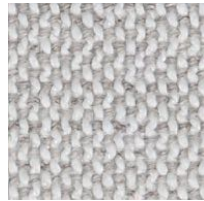
Strand (F1) 00



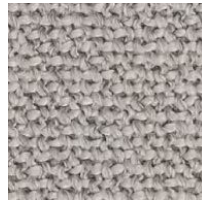
Strand (F1) 75



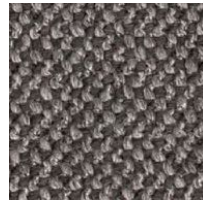
Strand (F1) 77



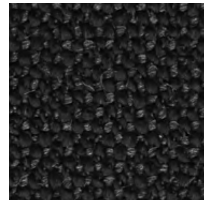
Ruig (F1) 02



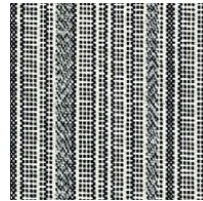
Ruig (F1) 71



Ruig (F1) 78



Ruig (F1) 88



Kokura Stripe(F1) 1037



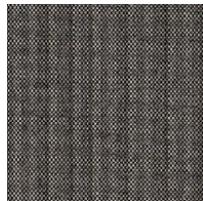
Kokura Stripe (F1) 1036



Kokura Stripe (F1) 1035



Kokura Stripe (F1) 1034



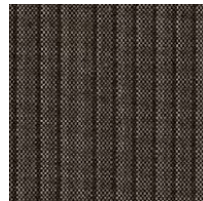
Kokura Stripe (F1) 1033



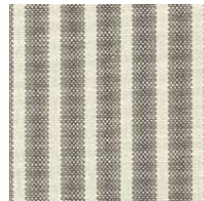
Kokura Stripe (F1) 1032



Kokura Stripe (F1) 1031



Kokura Stripe (F1) 1030



Kokura Stripe (F1) 1039



Kokura Stripe (F1) 1038



Katsuragi white (F1)



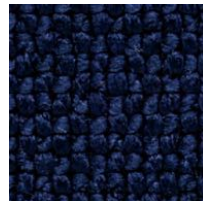
Bolster (F2) 09



Bolster (F2) 75



Bolster (F2) 77



Bolster (F2) 44



Bolster (F2) 80



Bolster (F2) 88

Special order



Red



Orange



Yellow



Green



Green 2



Green 3



Blue 1



Blue 2



Blue 3

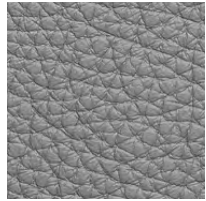
Embossed leather (L1)



40202



40242



40243



40204



40205



40206



40209



40210



40215

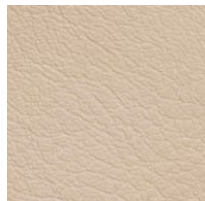


40216

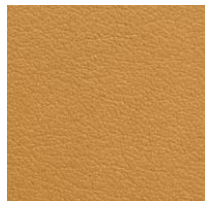
Smooth leather (L2)



40110



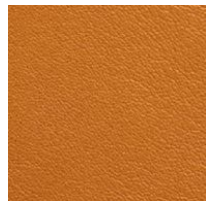
40109



40106



40108



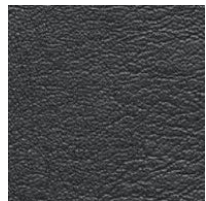
40105



40104



40103



40107



40102



40101