



Timeline

The seat frame was made to be one size bigger than the seat surface. To increase the overall strength while adding cushioning to the thin seat surface, we used a small pocket coil to achieve a bouncy seat surface. While carving this product's legs and seat frame, we explored how we could gently merge the seat surface and the legs, and create the uniformity between seat frame and legs. The wide variety of sizes exists in diverse spaces from living to public spaces.

Timeline

TIME & STYLE



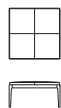
S-301 stool
W420×D420×H450

	<u>Beech</u>
F1	900
F2	1.000
L1	1.100
L2	1.200



S-302 stool
W600×D600×H450

	<u>Beech</u>
F1	1.400
F2	1.500
L1	1.700
L2	1.800



S-306 ottoman
W900×D900×H450

	<u>Beech</u>
F1	2.400
F2	2.500
L1	2.700
L2	2.800



S-307 ottoman
W1200×D1200×H450

	<u>Beech</u>
F1	4.000
F2	4.100
L1	4.300
L2	4.400

W (width)
D (depth)
H (height)

Dimensions Unit: mm

Prices in Euro
VAT not included

F1 (Fabric rank 1)
F2 (Fabric rank 2)
L1 (Leather rank 1)
L2 (Leather rank 2)



S-303 bench
W900×D420×H450

	<u>Beech</u>
F1	1.500
F2	1.600
L1	1.800
L2	1.900



S-304 bench
W1200×D420×H450

	<u>Beech</u>
F1	1.900
F2	2.000
L1	2.300
L2	2.400

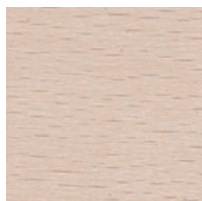


S-305 bench
W1600×D420×H450

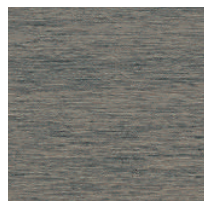
	<u>Beech</u>
F1	2.600
F2	2.700
L1	3.100
L2	3.200



Beech
Natural white



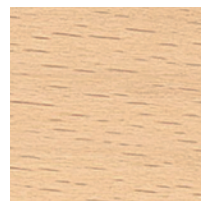
Beech
Snow white



Beech
Medium grey



Beech
Charcoal grey



Beech
Soap

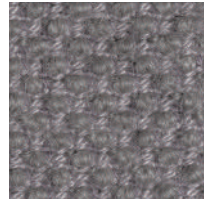
New Fabrics



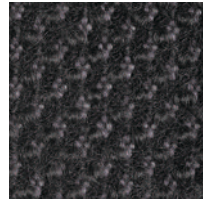
Shizuku (F2) KO1001



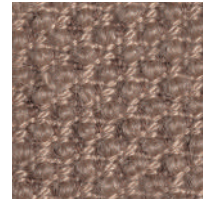
Shizuku (F2) KO1002



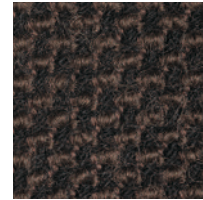
Shizuku (F2) KO1003



Shizuku (F2) KO1004



Shizuku (F2) KO1005



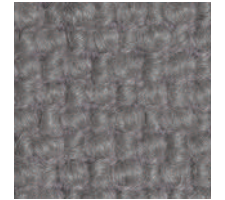
Shizuku (F2) KO1006



Migiwa (F2) KO2001



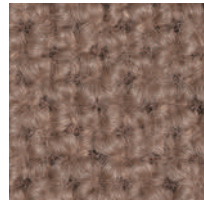
Migiwa (F2) KO2002



Migiwa (F2) KO2003



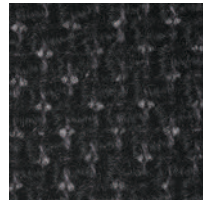
Migiwa (F2) KO2004



Migiwa (F2) KO2005



Migiwa (F2) KO2006



Migiwa (F2) KO2007



Migiwa (F2) KO2008



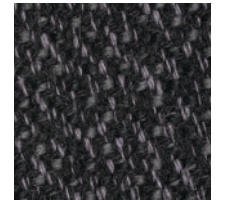
Migiwa (F2) KO2009



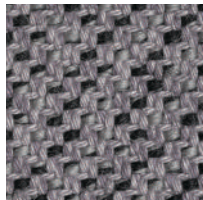
Migiwa (F2) KO2010



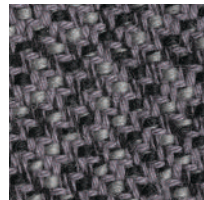
Mikage (F2) KO4001



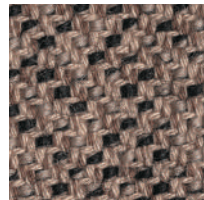
Mikage (F2) KO4002



Mikage (F2) KO4003



Mikage (F2) KO4011

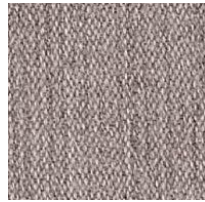


Mikage (F2) KO4005

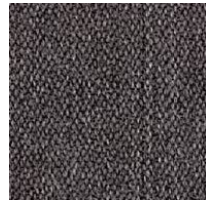


Mikage (F2) KO4006

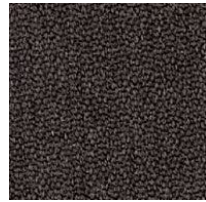
Fabrics



Riff (F1) 13/08



Riff (F1) 12/80



Riff (F1) 07/78



Riff (F1) 05/99



Riff (F1) 06/77



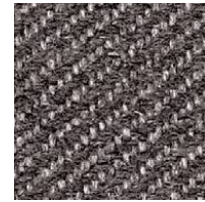
Bergen (F1) 05/09



Bergen (F1) 03/07



Bergen (F1) 10/84



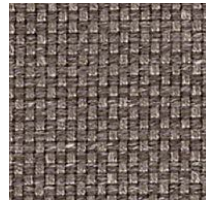
Bergen (F1) 09/86



Bergen (F1) 02/77



Strand (F1) 00



Strand (F1) 75



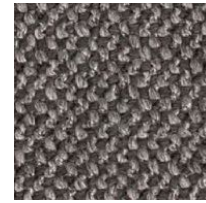
Strand (F1) 77



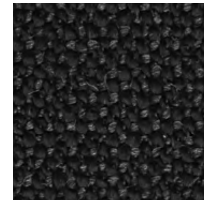
Ruig (F1) 02



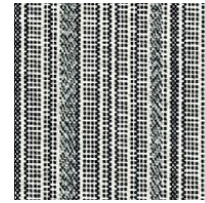
Ruig (F1) 71



Ruig (F1) 78



Ruig (F1) 88



Kokura Stripe(F1) 1037



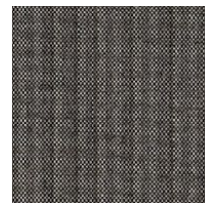
Kokura Stripe (F1) 1036



Kokura Stripe (F1) 1035



Kokura Stripe (F1) 1034



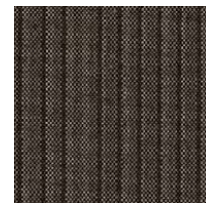
Kokura Stripe (F1) 1033



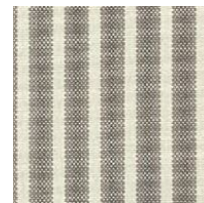
Kokura Stripe (F1) 1032



Kokura Stripe (F1) 1031



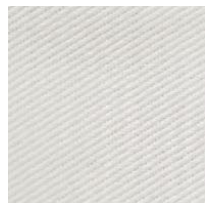
Kokura Stripe (F1) 1030



Kokura Stripe (F1) 1039



Kokura Stripe (F1) 1038



Katsuragi white (F1)



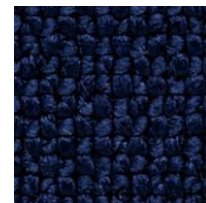
Bolster (F2) 09



Bolster (F2) 75



Bolster (F2) 77



Bolster (F2) 44



Bolster (F2) 80

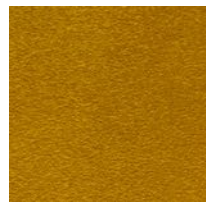


Bolster (F2) 88

Special order



Red



Orange



Yellow



Green



Green 2



Green 3



Blue 1



Blue 2



Blue 3

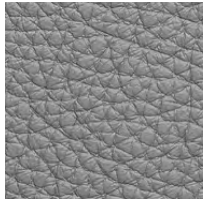
Embossed leather (L1)



40202



40242



40243



40204



40205



40206



40209



40210



40215



40216

Smooth leather (L2)



40110



40109



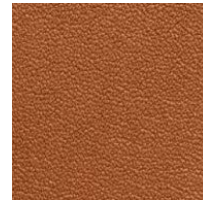
40106



40108



40105



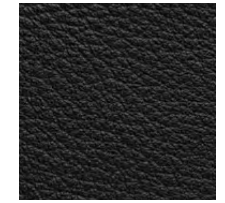
40104



40103



40107



40102



40101