



The sensual ladder back lounge arm

This is a compact lounge chair built for maximum comfort born from a new concept, with the seat cushions attached to a complete wooden frame using belts.

To form the wooden frame, pared components are organically joined as if the softly carved forms combine into a tense outline. By making this complete wooden frame a structure with the legs on the outside of the seat frame, the self-supporting seat cushions fit cleanly into the frame and are affixed to the frame with belts. The cushions that are appropriately soft accommodates the body shape of the user to provide flexible support. The elliptical front and rear legs spray outward from the seat frame so that the entire lounge chair is stable.

Also, the compact size gives it a volume that is easy to use in private spaces such as living rooms, lounge rooms and studies. We imagined the chair placed in a space and made the backboard ladder-shaped so that the back looks unique while the frame and cushion share a deeper affinity. The broad armrests extend parallel towards the back and converge smoothly towards the outer sides. The legs, which have an elliptical cross-section, possess both the softness of surfaces and the sharpness of edges. The cushions, which are plump yet have a sense of looseness, harmonize with the frame while the piping makes the outline look sharp, giving the entire chair a refined air.

The sensual ladder back lounge arm



I-744 lounge chair

W740×D690×H778×SH438×AH570

Beech

F1 2.900

F2 3.000

L1 3.100

L2 3.300

TIME & STYLE

W (width)
D (depth)
H (height)
SH (seat height)

Dimensions Unit: mm

Prices in Euro
VAT not included

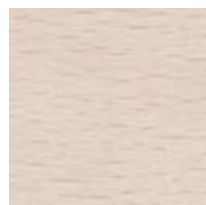
F1 (Fabric rank 1)
F2 (Fabric rank 2)
L1 (Leather rank 1)
L2 (Leather rank 2)

Production of this product is currently on hold.

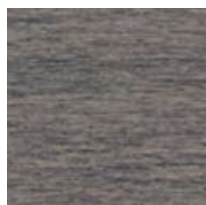
Sales are scheduled to resume in the summer 2024.



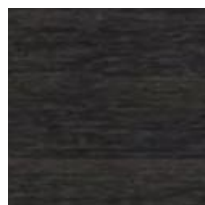
Beech
Natural white



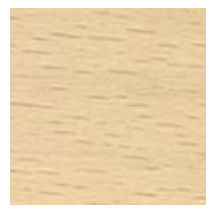
Beech
Snow white



Beech
Medium grey



Beech
Charcoal grey



Beech
Soap

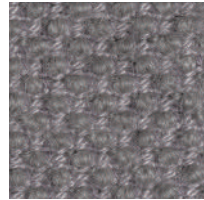
New Fabrics



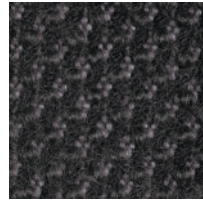
Shizuku (F2) KO1001



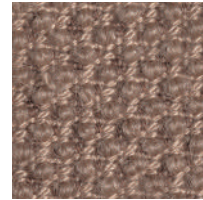
Shizuku (F2) KO1002



Shizuku (F2) KO1003



Shizuku (F2) KO1004



Shizuku (F2) KO1005



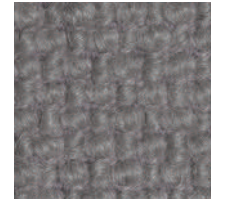
Shizuku (F2) KO1006



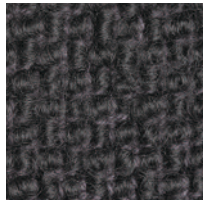
Migiwa (F2) KO2001



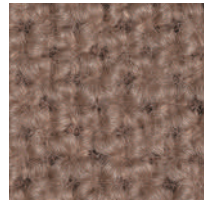
Migiwa (F2) KO2002



Migiwa (F2) KO2003



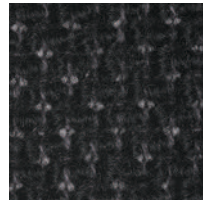
Migiwa (F2) KO2004



Migiwa (F2) KO2005



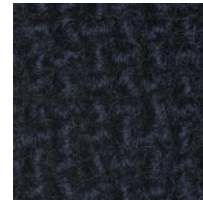
Migiwa (F2) KO2006



Migiwa (F2) KO2007



Migiwa (F2) KO2008



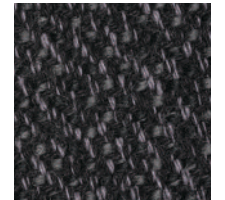
Migiwa (F2) KO2009



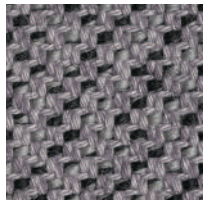
Migiwa (F2) KO2010



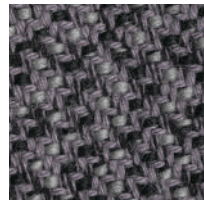
Mikage (F2) KO4001



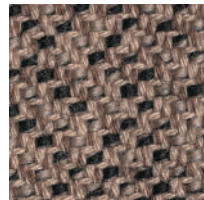
Mikage (F2) KO4002



Mikage (F2) KO4003



Mikage (F2) KO4011

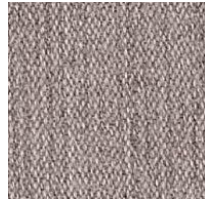


Mikage (F2) KO4005

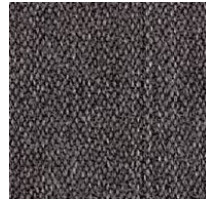


Mikage (F2) KO4006

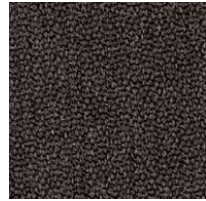
Fabrics



Riff (F1) 13/08



Riff (F1) 12/80



Riff (F1) 07/78



Riff (F1) 05/99



Riff (F1) 06/77



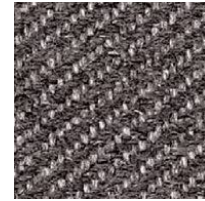
Bergen (F1) 05/09



Bergen (F1) 03/07



Bergen (F1) 10/84



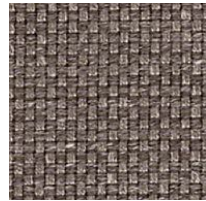
Bergen (F1) 09/86



Bergen (F1) 02/77



Strand (F1) 00



Strand (F1) 75



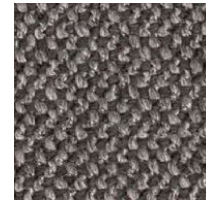
Strand (F1) 77



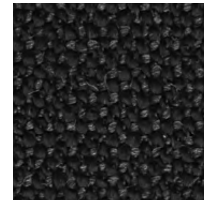
Ruig (F1) 02



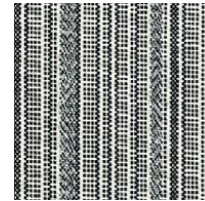
Ruig (F1) 71



Ruig (F1) 78



Ruig (F1) 88



Kokura Stripe (F1) 1037



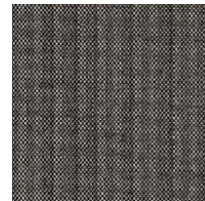
Kokura Stripe (F1) 1036



Kokura Stripe (F1) 1035



Kokura Stripe (F1) 1034



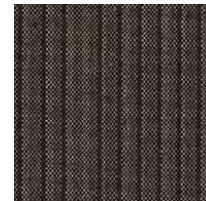
Kokura Stripe (F1) 1033



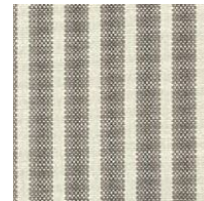
Kokura Stripe (F1) 1032



Kokura Stripe (F1) 1031



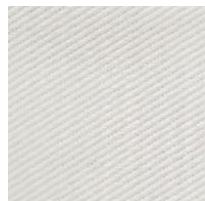
Kokura Stripe (F1) 1030



Kokura Stripe (F1) 1039



Kokura Stripe (F1) 1038



Katsuragi white (F1)



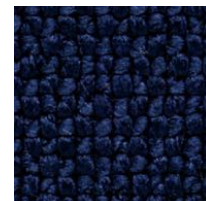
Bolster (F2) 09



Bolster (F2) 75



Bolster (F2) 77



Bolster (F2) 44



Bolster (F2) 80

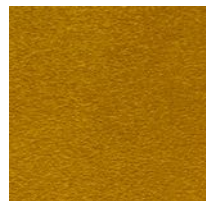


Bolster (F2) 88

Special order



Red



Orange



Yellow



Green



Green 2



Green 3



Blue 1



Blue 2



Blue 3

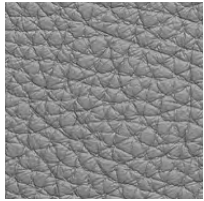
Embossed leather (L1)



40202



40242



40243



40204



40205



40206



40209



40210



40215



40216

Smooth leather (L2)



40110



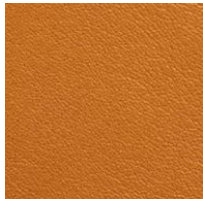
40109



40106



40108



40105



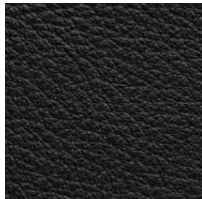
40104



40103



40107



40102



40101