



The sensual ladder back lounge

This lounge chair is born from a new concept in which the seat cushion is affixed by belts to a finished wood frame. The louvers of the wood frame are connected by a special joint to fuse with the tension-filled outline. The structure gives rise to a sense of unity in the framework as a whole.

The front and rear legs, elliptical in cross section, splay outward from the seat frame to lend a sense of stability. The chair is compact in size so that it can be used easily in private spaces like a study, as well as living rooms and lounge spaces.

The sensual ladder back lounge



I-743 lounge chair
W573 × D690 × H778 × SH438

Beech

F1 2.700
F2 2.800
L1 2.900
L2 3.100

TIME & STYLE

W (width)
D (depth)
H (height)
SH (seat height)

Dimensions Unit: mm

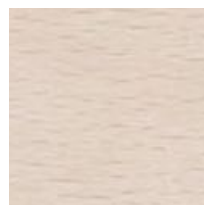
Prices in Euro
VAT not included

F1 (Fabric rank 1)
F2 (Fabric rank 2)
L1 (Leather rank 1)
L2 (Leather rank 2)

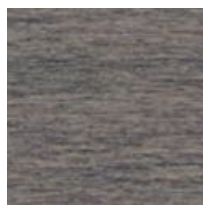
Production of this product is currently on hold.
Sales are scheduled to resume in the summer 2024.



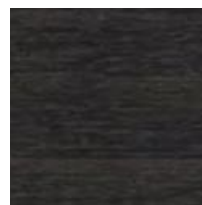
Beech
Natural white



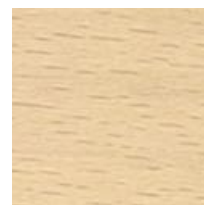
Beech
Snow white



Beech
Medium grey



Beech
Charcoal grey



Beech
Soap

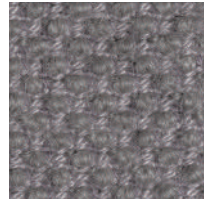
New Fabrics



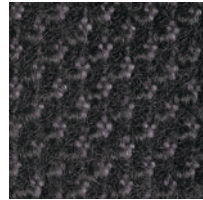
Shizuku (F2) KO1001



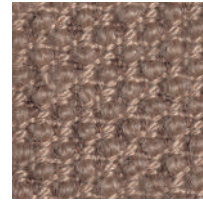
Shizuku (F2) KO1002



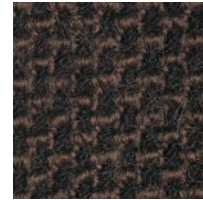
Shizuku (F2) KO1003



Shizuku (F2) KO1004



Shizuku (F2) KO1005



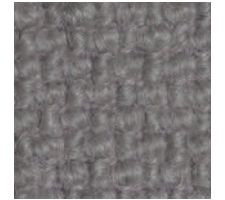
Shizuku (F2) KO1006



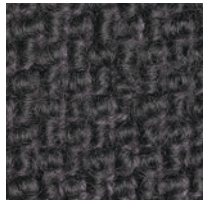
Migiwa (F2) KO2001



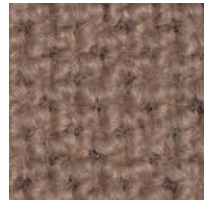
Migiwa (F2) KO2002



Migiwa (F2) KO2003



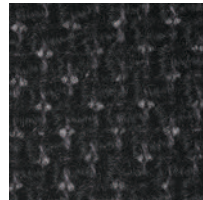
Migiwa (F2) KO2004



Migiwa (F2) KO2005



Migiwa (F2) KO2006



Migiwa (F2) KO2007



Migiwa (F2) KO2008



Migiwa (F2) KO2009



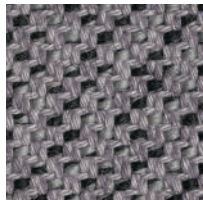
Migiwa (F2) KO2010



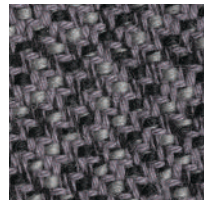
Mikage (F2) KO4001



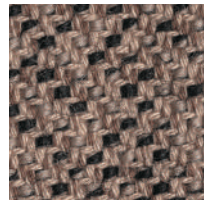
Mikage (F2) KO4002



Mikage (F2) KO4003



Mikage (F2) KO4011

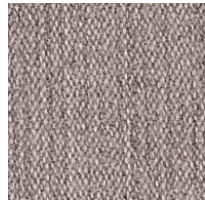


Mikage (F2) KO4005

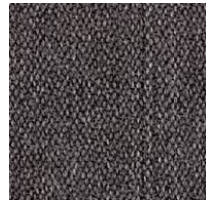


Mikage (F2) KO4006

Fabrics



Riff (F1) 13/08



Riff (F1) 12/80



Riff (F1) 07/78



Riff (F1) 05/99



Riff (F1) 06/77



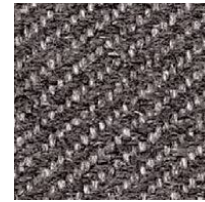
Bergen (F1) 05/09



Bergen (F1) 03/07



Bergen (F1) 10/84



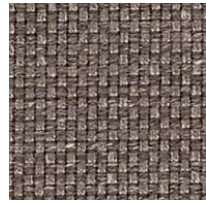
Bergen (F1) 09/86



Bergen (F1) 02/77



Strand (F1) 00



Strand (F1) 75



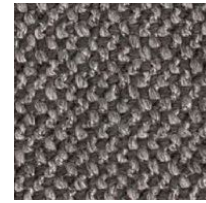
Strand (F1) 77



Ruig (F1) 02



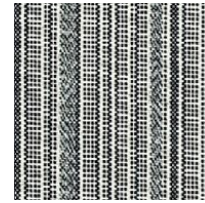
Ruig (F1) 71



Ruig (F1) 78



Ruig (F1) 88



Kokura Stripe (F1) 1037



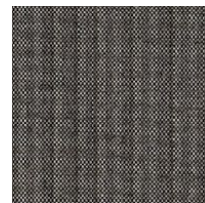
Kokura Stripe (F1) 1036



Kokura Stripe (F1) 1035



Kokura Stripe (F1) 1034



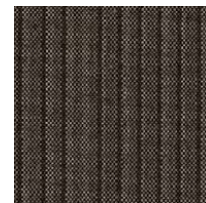
Kokura Stripe (F1) 1033



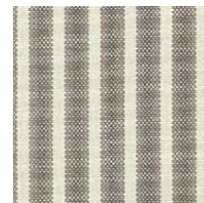
Kokura Stripe (F1) 1032



Kokura Stripe (F1) 1031



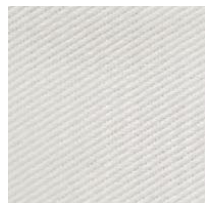
Kokura Stripe (F1) 1030



Kokura Stripe (F1) 1039



Kokura Stripe (F1) 1038



Katsuragi white (F1)



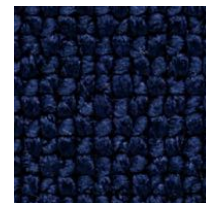
Bolster (F2) 09



Bolster (F2) 75



Bolster (F2) 77



Bolster (F2) 44



Bolster (F2) 80

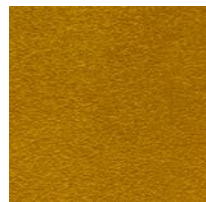


Bolster (F2) 88

Special order



Red



Orange



Yellow



Green



Green 2



Green 3



Blue 1



Blue 2



Blue 3

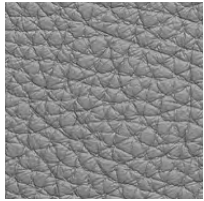
Embossed leather (L1)



40202



40242



40243



40204



40205



40206



40209



40210



40215



40216

Smooth leather (L2)



40110



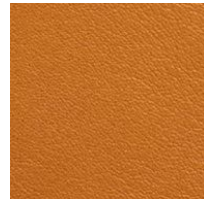
40109



40106



40108



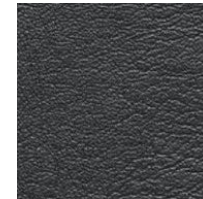
40105



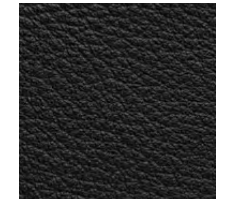
40104



40103



40107



40102



40101