

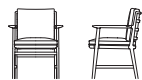


The sensual ladder back armchair

We thought that other than how it felt to sit on the seat, another major factor for relaxing time would be how comfortable the backrest felt. In particular, by increasing the back's cushioning, the cushion fits the user's body well. It solves a difference in comfort depending on the user's body, making the user feel like they are sitting on a sofa.

The cross-sections of the front and rear legs are elliptical so that the edges of the legs have thin lines from the front view, making it look sharp, and from the side view, the oval shape makes the chair look soft, with the entire frame being smoothly connected.

The sensual ladder back armchair



I-742 armchair

W623 × D600 × H802 × SH468 × AH610

Beech

F1 2.200

F2 2.300

L1 2.400

L2 2.600

TIME & STYLE

W (width)

D (depth)

H (height)

SH (seat height)

AH (arm height)

Dimensions Unit: mm

Prices in Euro

VAT not included

F1 (Fabric rank 1)

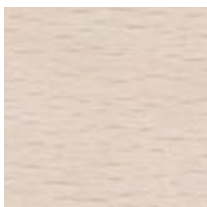
F2 (Fabric rank 2)

L1 (Leather rank 1)

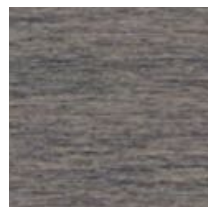
L2 (Leather rank 2)



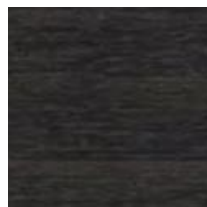
Beech
Natural white



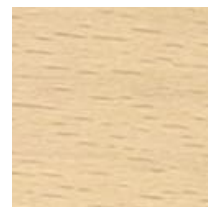
Beech
Snow white



Beech
Medium grey



Beech
Charcoal grey



Beech
Soap

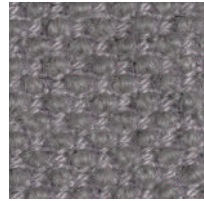
New Fabrics



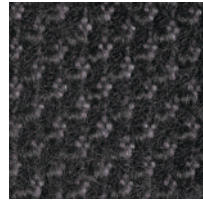
Shizuku (F2) KO1001



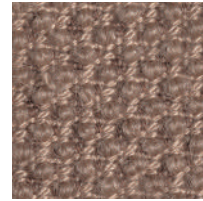
Shizuku (F2) KO1002



Shizuku (F2) KO1003



Shizuku (F2) KO1004



Shizuku (F2) KO1005



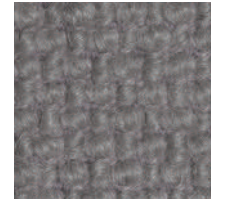
Shizuku (F2) KO1006



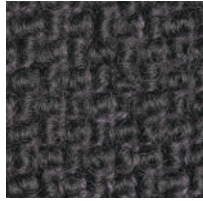
Migiwa (F2) KO2001



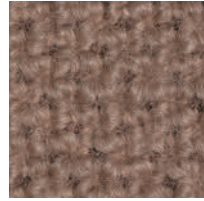
Migiwa (F2) KO2002



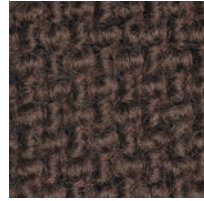
Migiwa (F2) KO2003



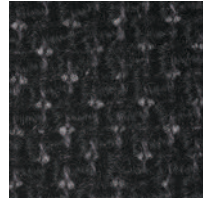
Migiwa (F2) KO2004



Migiwa (F2) KO2005



Migiwa (F2) KO2006



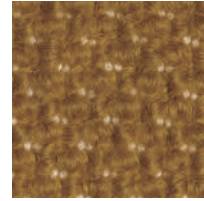
Migiwa (F2) KO2007



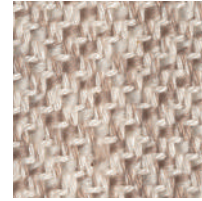
Migiwa (F2) KO2008



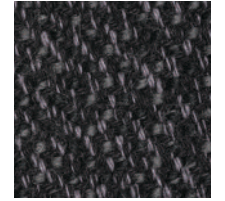
Migiwa (F2) KO2009



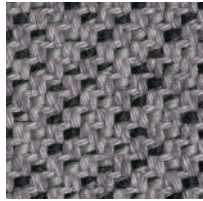
Migiwa (F2) KO2010



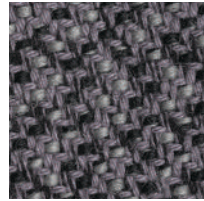
Mikage (F2) KO4001



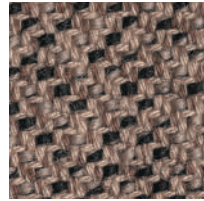
Mikage (F2) KO4002



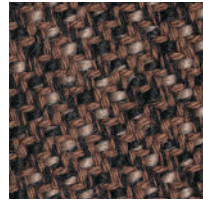
Mikage (F2) KO4003



Mikage (F2) KO4011

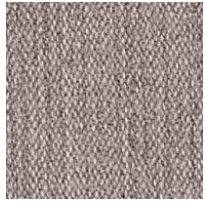


Mikage (F2) KO4005

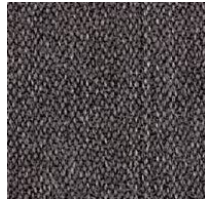


Mikage (F2) KO4006

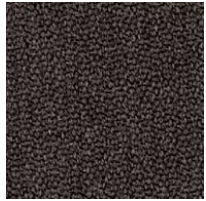
Fabrics



Riff (F1) 13/08



Riff (F1) 12/80



Riff (F1) 07/78



Riff (F1) 05/99



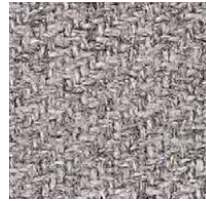
Riff (F1) 06/77



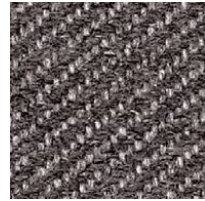
Bergen (F1) 05/09



Bergen (F1) 03/07



Bergen (F1) 10/84



Bergen (F1) 09/86



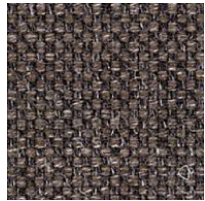
Bergen (F1) 02/77



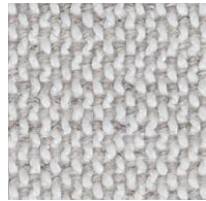
Strand (F1) 00



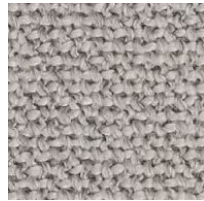
Strand (F1) 75



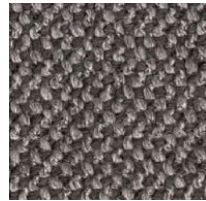
Strand (F1) 77



Ruig (F1) 02



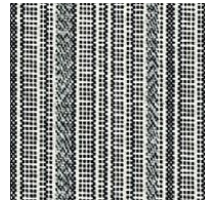
Ruig (F1) 71



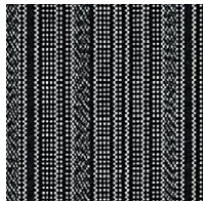
Ruig (F1) 78



Ruig (F1) 88



Kokura Stripe(F1) 1037



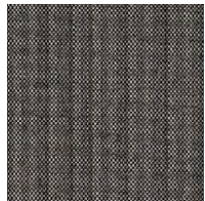
Kokura Stripe (F1) 1036



Kokura Stripe (F1) 1035



Kokura Stripe (F1) 1034



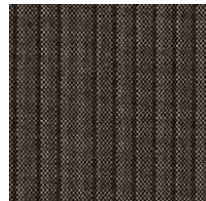
Kokura Stripe (F1) 1033



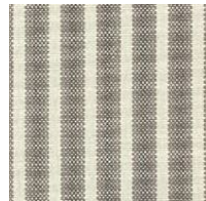
Kokura Stripe (F1) 1032



Kokura Stripe (F1) 1031



Kokura Stripe (F1) 1030



Kokura Stripe (F1) 1039



Kokura Stripe (F1) 1038



Katsuragi white (F1)



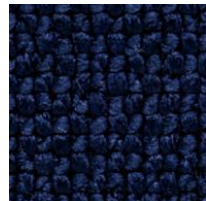
Bolster (F2) 09



Bolster (F2) 75



Bolster (F2) 77



Bolster (F2) 44



Bolster (F2) 80



Bolster (F2) 88

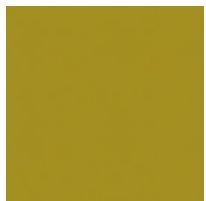
Special order



Red



Orange



Yellow



Green



Green 2



Green 3



Blue 1



Blue 2



Blue 3

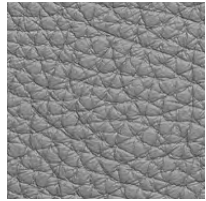
Embossed leather (L1)



40202



40242



40243



40204



40205



40206



40209



40210



40215



40216

Smooth leather (L2)



40110



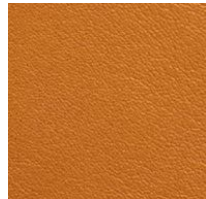
40109



40106



40108



40105



40104



40103



40107



40102



40101