



### The bent armchair

The technology for bentwood was invented by German Michael Thonet around 1840. Bentwood is a method of construction that takes advantage of a characteristic of wood in that it does not return to its original shape after deformation under pressure. Solid wood is boiled and is shaped along a mould to form beautiful curves.

The technology for bentwood was introduced to Japan over a century ago. The mould jigs, indispensable tools for beautiful moulding, are manually adjusted and created by skilled artisans with immaculate precision. During moulding, solid wood is steamed for a long time at close to 100°C, then infused with moisture and bent according to the jig.

To fabricate a chair using the technique of bentwood, we conceived of a design that inherits history to become a contemporary standard. The bent armchair is made in Japan's only factory that specializes in three-dimensional bentwood, inheriting manual construction methods from long ago. The frame structure follows that of conventional bentwood chairs, but the rear legs and the armrests retain straight portions that add a modern sophistication. The arm portion is bent to its limit, in pursuit of a beautiful curve that nicely fits the hand. The rattan backrest cradles the body and enhances comfort.

Bentwood chairs by Time & Style, in which the modern and the classic coexist, give form to the unsparing commitment of the makers to their products. Just as bentwood chairs remain beloved around the world, it is our hope that the bent armchair will be welcomed into people's lives across a wide range of generations.

## The bent armchair



I-612 armchair  
W570 × D512 × H800 × SH448 × AH648

### Beech

F1 1.400  
F2 1.460  
L1 1.510  
L2 1.570

## TIME & STYLE

W (width)  
D (depth)  
H (height)  
SH (seat height)  
AH (arm height)

Dimensions Unit: mm

Prices in Euro  
VAT not included

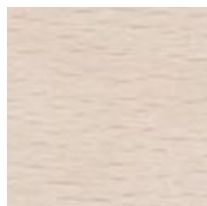
F1 (Fabric rank 1)  
F2 (Fabric rank 2)  
L1 (Leather rank 1)  
L2 (Leather rank 2)



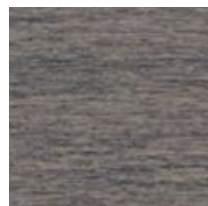
Rattan  
Kagome



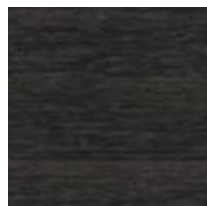
Beech  
Natural white



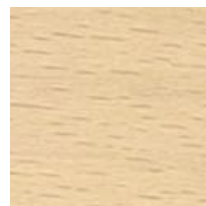
Beech  
Snow white



Beech  
Medium grey



Beech  
Charcoal grey



Beech  
Soap

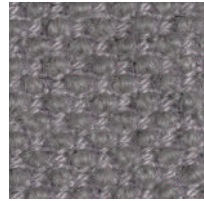
New Fabrics



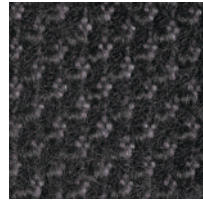
Shizuku (F2) KO1001



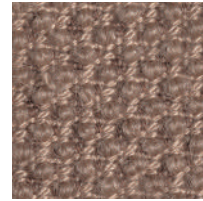
Shizuku (F2) KO1002



Shizuku (F2) KO1003



Shizuku (F2) KO1004



Shizuku (F2) KO1005



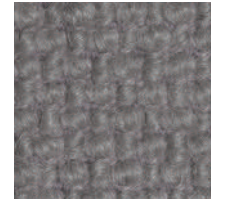
Shizuku (F2) KO1006



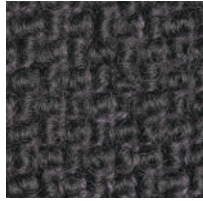
Migiwa (F2) KO2001



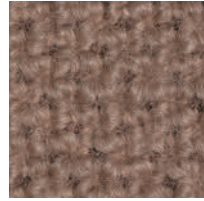
Migiwa (F2) KO2002



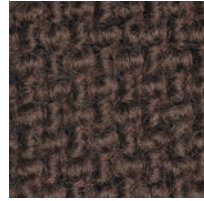
Migiwa (F2) KO2003



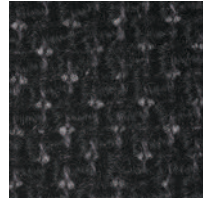
Migiwa (F2) KO2004



Migiwa (F2) KO2005



Migiwa (F2) KO2006



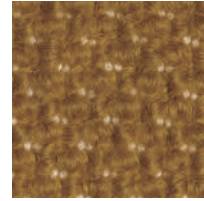
Migiwa (F2) KO2007



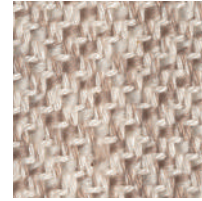
Migiwa (F2) KO2008



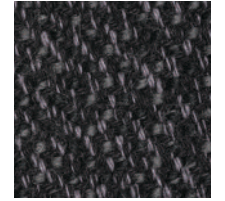
Migiwa (F2) KO2009



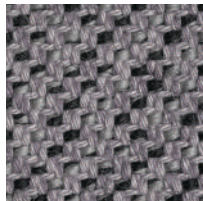
Migiwa (F2) KO2010



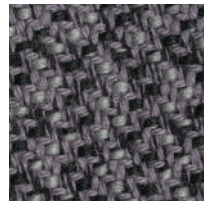
Mikage (F2) KO4001



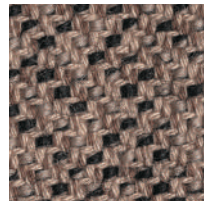
Mikage (F2) KO4002



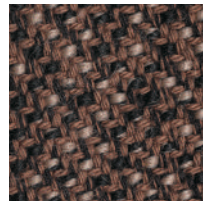
Mikage (F2) KO4003



Mikage (F2) KO4011



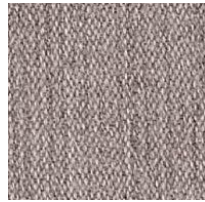
Mikage (F2) KO4005



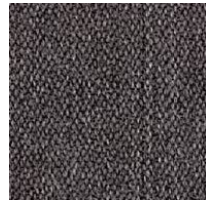
Mikage (F2) KO4006



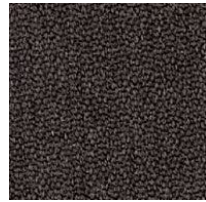
Fabrics



Riff (F1) 13/08



Riff (F1) 12/80



Riff (F1) 07/78



Riff (F1) 05/99



Riff (F1) 06/77



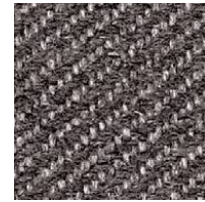
Bergen (F1) 05/09



Bergen (F1) 03/07



Bergen (F1) 10/84



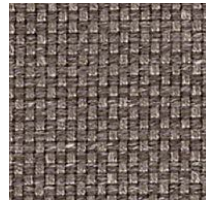
Bergen (F1) 09/86



Bergen (F1) 02/77



Strand (F1) 00



Strand (F1) 75



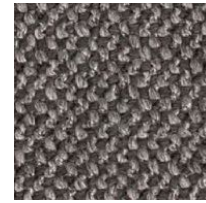
Strand (F1) 77



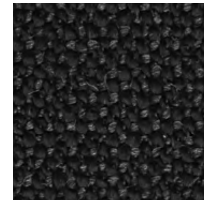
Ruig (F1) 02



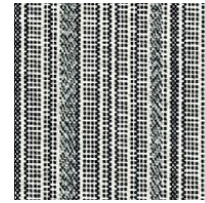
Ruig (F1) 71



Ruig (F1) 78



Ruig (F1) 88



Kokura Stripe(F1) 1037



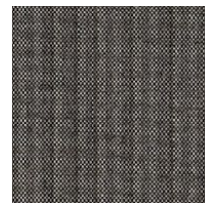
Kokura Stripe (F1) 1036



Kokura Stripe (F1) 1035



Kokura Stripe (F1) 1034



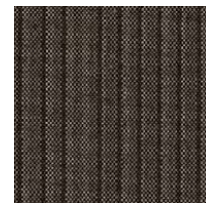
Kokura Stripe (F1) 1033



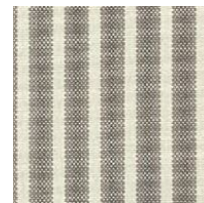
Kokura Stripe (F1) 1032



Kokura Stripe (F1) 1031



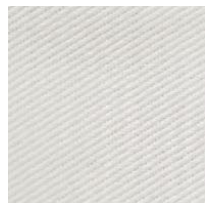
Kokura Stripe (F1) 1030



Kokura Stripe (F1) 1039



Kokura Stripe (F1) 1038



Katsuragi white (F1)



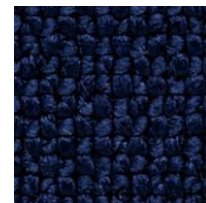
Bolster (F2) 09



Bolster (F2) 75



Bolster (F2) 77



Bolster (F2) 44



Bolster (F2) 80

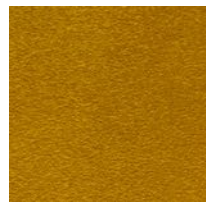


Bolster (F2) 88

Special order



Red



Orange



Yellow



Green



Green 2



Green 3



Blue 1



Blue 2



Blue 3



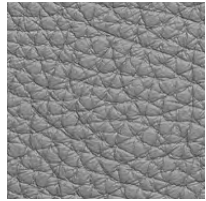
Embossed leather (L1)



40202



40242



40243



40204



40205



40206



40209



40210



40215



40216

Smooth leather (L2)



40110



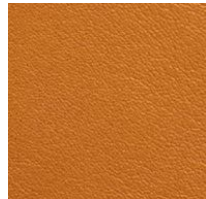
40109



40106



40108



40105



40104



40103



40107



40102



40101