



Takenoko chair, Takenoko lounge chair

Designed by Hiroshi Nakamura & NAP

This chair holds a small spatial quality composed of horizontal and vertical elements akin to Japanese wooden frame architecture.

It was designed to enable the armrests to be hung on a table, for easy cleaning under the table. Giving the legs diagonally cut where toes and heels are likely to hit reveals a beautiful cross section with the look of a takenoko (bamboo shoot). This is a manifestation of the wabi-sabi sensibility, which takes bamboo shoots poking through the floor, hated in a home, to be worthy of adoration as charms of a humble abode.

Takenoko chair, Takenoko lounge chair

Designed by Hiroshi Nakamura & NAP



Takenoko chair

NAP-001 armchair

W560 × D483 × H760 × SH437 × AH618

| | Beech | White ash |
|----|-------|-----------|
| F1 | 1.000 | 1.100 |
| F2 | 1.150 | 1.250 |
| L1 | 1.300 | 1.400 |
| L2 | 1.480 | 1.580 |



Takenoko lounge chair

NAP-002 lounge chair

W615 × D609 × H688 × SH392 × AH525

| | Beech | White ash |
|----|-------|-----------|
| F1 | 1.750 | 1.850 |
| F2 | 1.900 | 2.000 |
| L1 | 2.080 | 2.180 |
| L2 | 2.280 | 2.380 |

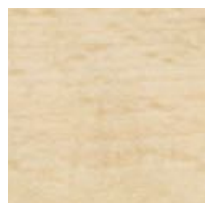
TIME & STYLE

W (width)
D (depth)
H (height)
SH (seat height)
AH (arm height)

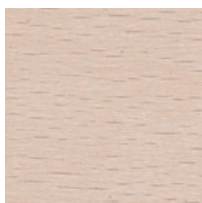
Dimensions Unit: mm

Prices in Euro
VAT not included

F1 (Fabric rank 1)
F2 (Fabric rank 2)
L1 (Leather rank 1)
L2 (Leather rank 2)



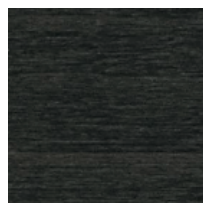
Beech
Natural white



Beech
Snow white



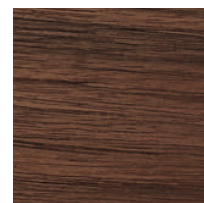
Beech
Medium grey



Beech
Charcoal grey



White ash
Teak colour



White ash
Walnut colour

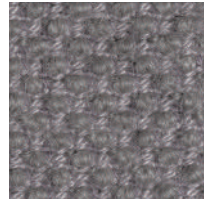
New Fabrics



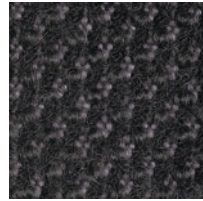
Shizuku (F2) KO1001



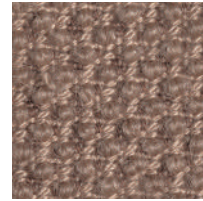
Shizuku (F2) KO1002



Shizuku (F2) KO1003



Shizuku (F2) KO1004



Shizuku (F2) KO1005



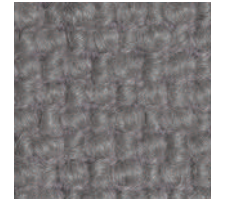
Shizuku (F2) KO1006



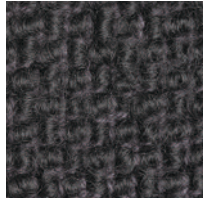
Migiwa (F2) KO2001



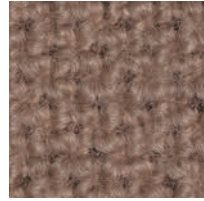
Migiwa (F2) KO2002



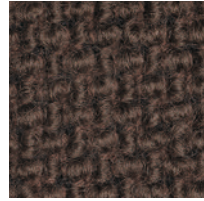
Migiwa (F2) KO2003



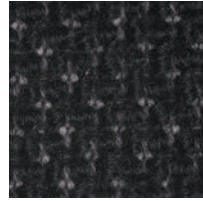
Migiwa (F2) KO2004



Migiwa (F2) KO2005



Migiwa (F2) KO2006



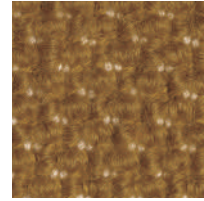
Migiwa (F2) KO2007



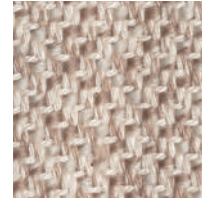
Migiwa (F2) KO2008



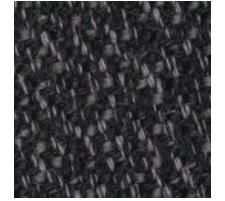
Migiwa (F2) KO2009



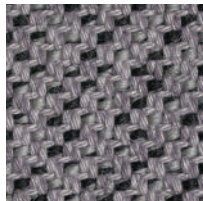
Migiwa (F2) KO2010



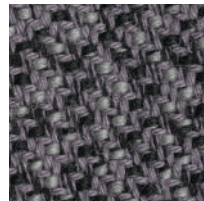
Mikage (F2) KO4001



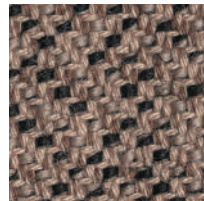
Mikage (F2) KO4002



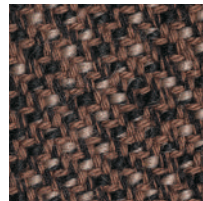
Mikage (F2) KO4003



Mikage (F2) KO4011

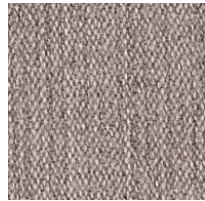


Mikage (F2) KO4005

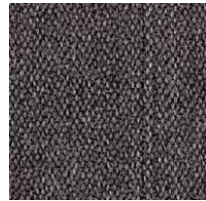


Mikage (F2) KO4006

Fabrics



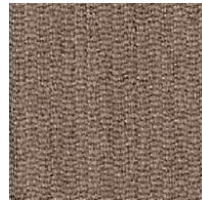
Riff (F1) 13/08



Riff (F1) 12/80



Riff (F1) 07/78



Riff (F1) 05/99



Riff (F1) 06/77



Bergen (F1) 05/09



Bergen (F1) 03/07



Bergen (F1) 10/84



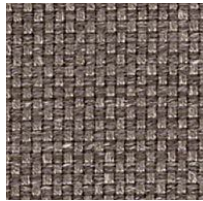
Bergen (F1) 09/86



Bergen (F1) 02/77



Strand (F1) 00



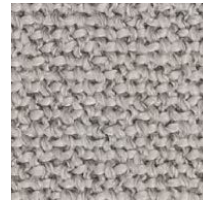
Strand (F1) 75



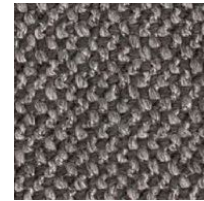
Strand (F1) 77



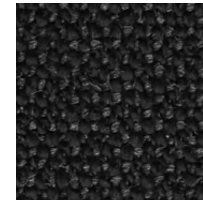
Ruig (F1) 02



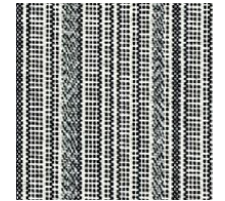
Ruig (F1) 71



Ruig (F1) 78



Ruig (F1) 88



Kokura Stripe(F1) 1037



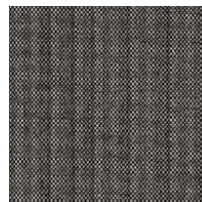
Kokura Stripe (F1) 1036



Kokura Stripe (F1) 1035



Kokura Stripe (F1) 1034



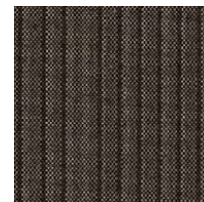
Kokura Stripe (F1) 1033



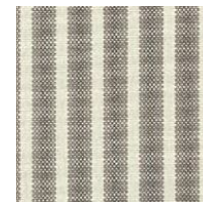
Kokura Stripe (F1) 1032



Kokura Stripe (F1) 1031



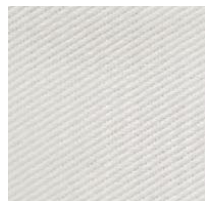
Kokura Stripe (F1) 1030



Kokura Stripe (F1) 1039



Kokura Stripe (F1) 1038



Katsuragi white (F1)



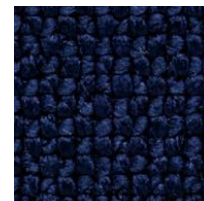
Bolster (F2) 09



Bolster (F2) 75



Bolster (F2) 77



Bolster (F2) 44



Bolster (F2) 80

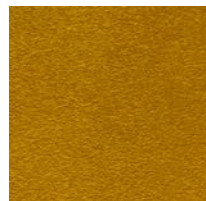


Bolster (F2) 88

Special order



Red



Orange



Yellow



Green



Green 2



Green 3



Blue 1



Blue 2



Blue 3

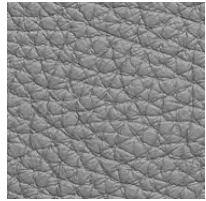
Embossed leather (L1)



40202



40242



40243



40204



40205



40206



40209



40210



40215



40216

Smooth leather (L2)



40110



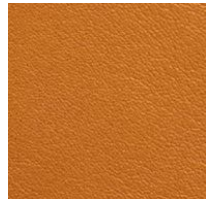
40109



40106



40108



40105



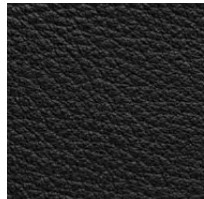
40104



40103



40107



40102



40101