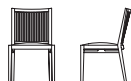




### Sakura Sakura

We accentuate its simplicity as a chair by reducing the classical decoration without considerably changing its overall outline. Round spokes do not fit in with the Japanese expression of lattices. Therefore, the four corners of basically square bars were slightly chamfered, creating a soft expression while keeping a square silhouette. The chair has a simple and modern impression, as the lattices of the simple chair evoke an image of a traditional Japanese town.

## Sakura Sakura



I-081 side chair  
W529 × D578 × H825 × SH430

### Beech

|    |       |
|----|-------|
| F1 | 1.100 |
| F2 | 1.150 |
| L1 | 1.300 |
| L2 | 1.350 |



I-082 armchair  
W608 × D578 × H825 × SH430 × AH615

### Beech

|    |       |
|----|-------|
| F1 | 1.400 |
| F2 | 1.450 |
| L1 | 1.600 |
| L2 | 1.650 |

## TIME & STYLE

W (width)  
D (depth)  
H (height)  
SH (seat height)  
AH (arm height)

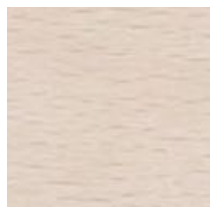
Dimensions Unit: mm

Prices in Euro  
VAT not included

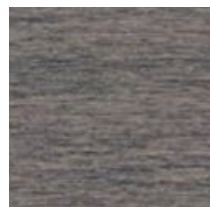
F1 (Fabric rank 1)  
F2 (Fabric rank 2)  
L1 (Leather rank 1)  
L2 (Leather rank 2)



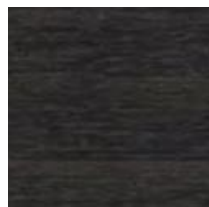
Beech  
Natural white



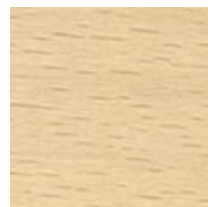
Beech  
Snow white



Beech  
Medium grey



Beech  
Charcoal grey



Beech  
Soap

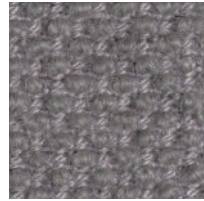
New Fabrics



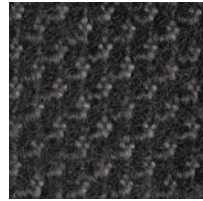
Shizuku (F2) KO1001



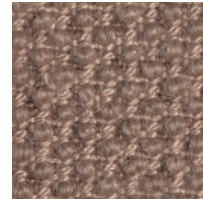
Shizuku (F2) KO1002



Shizuku (F2) KO1003



Shizuku (F2) KO1004



Shizuku (F2) KO1005



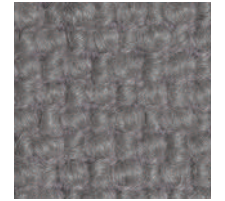
Shizuku (F2) KO1006



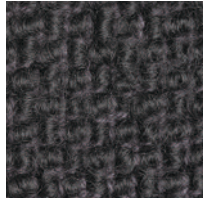
Migiwa (F2) KO2001



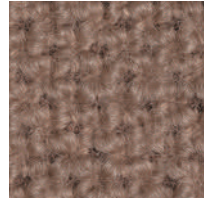
Migiwa (F2) KO2002



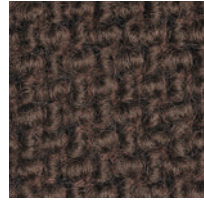
Migiwa (F2) KO2003



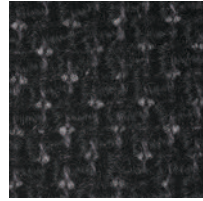
Migiwa (F2) KO2004



Migiwa (F2) KO2005



Migiwa (F2) KO2006



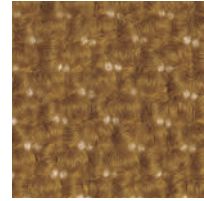
Migiwa (F2) KO2007



Migiwa (F2) KO2008



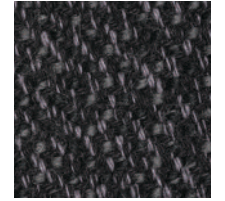
Migiwa (F2) KO2009



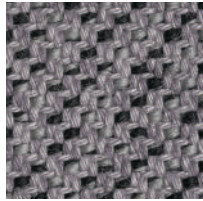
Migiwa (F2) KO2010



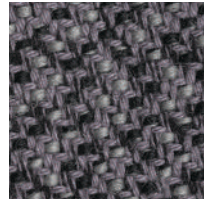
Mikage (F2) KO4001



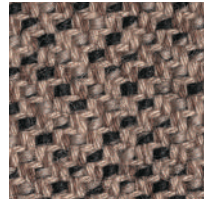
Mikage (F2) KO4002



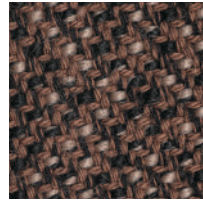
Mikage (F2) KO4003



Mikage (F2) KO4011

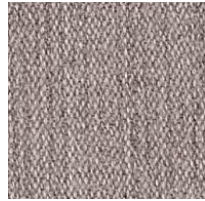


Mikage (F2) KO4005

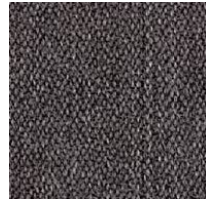


Mikage (F2) KO4006

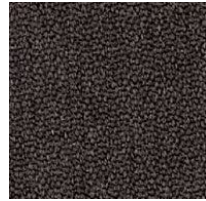
Fabrics



Riff (F1) 13/08



Riff (F1) 12/80



Riff (F1) 07/78



Riff (F1) 05/99



Riff (F1) 06/77



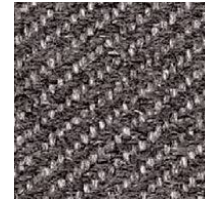
Bergen (F1) 05/09



Bergen (F1) 03/07



Bergen (F1) 10/84



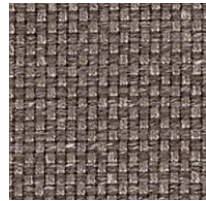
Bergen (F1) 09/86



Bergen (F1) 02/77



Strand (F1) 00



Strand (F1) 75



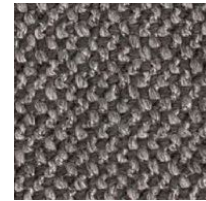
Strand (F1) 77



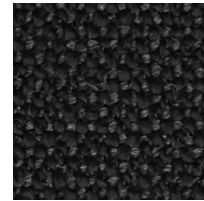
Ruig (F1) 02



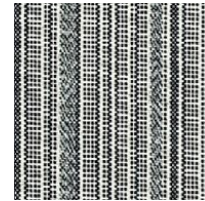
Ruig (F1) 71



Ruig (F1) 78



Ruig (F1) 88



Kokura Stripe(F1) 1037



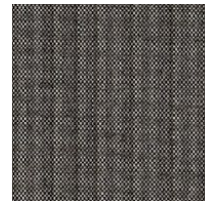
Kokura Stripe (F1) 1036



Kokura Stripe (F1) 1035



Kokura Stripe (F1) 1034



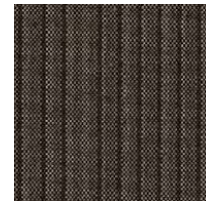
Kokura Stripe (F1) 1033



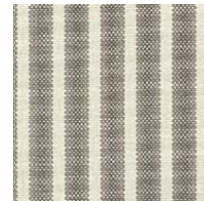
Kokura Stripe (F1) 1032



Kokura Stripe (F1) 1031



Kokura Stripe (F1) 1030



Kokura Stripe (F1) 1039



Kokura Stripe (F1) 1038



Katsuragi white (F1)



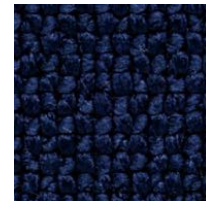
Bolster (F2) 09



Bolster (F2) 75



Bolster (F2) 77



Bolster (F2) 44



Bolster (F2) 80



Bolster (F2) 88

Special order



Red



Orange



Yellow



Green



Green 2



Green 3



Blue 1



Blue 2



Blue 3

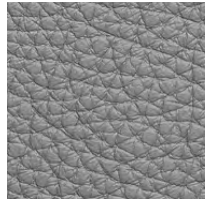
Embossed leather (L1)



40202



40242



40243



40204



40205



40206



40209



40210



40215



40216

Smooth leather (L2)



40110



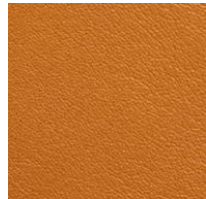
40109



40106



40108



40105



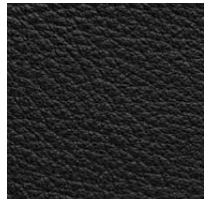
40104



40103



40107



40102



40101