



Nightfly chair

後脚と背柱の緩やかなカーブを描く曲線と、背柱から伸びる円弧を描いた長いアームが、豊かな時間のためのラウンジチェアとして存在します。奥行きが特徴ですが、快適な使用感を重視して、背板の位置を配置しています。また、座面を少しだけ傾斜させることで、見た目の木の硬質感よりも優しい背当たりとなり、体をゆったりと預けることができます。

背柱は顎出しという仕口方法で、部材同士を自然に繋げ、椅子全体に一体感を作り出しています。一つひとつの部材の仕口方法や顎出しのような精度が求められる仕様は、職人の技術に加え、日本人の手先の器用さと根気が必要です。

Nightfly chair



I-034 ラウンジチェア

W710×D670×H754×SH400×AH590

	ブナ	ウォールナット
F1	154,000 (140,000)	F1 176,000 (160,000)
F2	165,000 (150,000)	F2 187,000 (170,000)
L1	187,000 (170,000)	L1 209,000 (190,000)
L2	198,000 (180,000)	L2 220,000 (200,000)

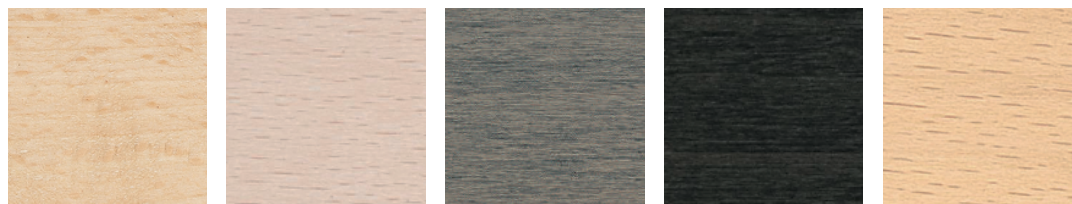
TIME & STYLE

W (幅)
D (奥行)
H (高さ)
SH (シート高)
AH (アーム高)

寸法単位：mm

価格は日本円
() は税抜き価格

F1 (生地 ランク 1)
F2 (生地 ランク 2)
L1 (革 ランク 1)
L2 (革 ランク 2)



ブナ
ナチュラルホワイト

ブナ
スノーホワイト

ブナ
ミディアムグレー

ブナ
チャコールグレー

ブナ
ソープ

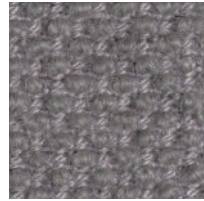
New Fabrics



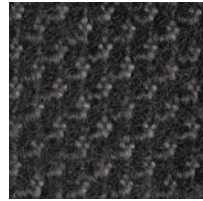
Shizuku (F2) KO1001



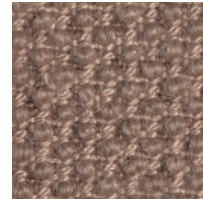
Shizuku (F2) KO1002



Shizuku (F2) KO1003



Shizuku (F2) KO1004



Shizuku (F2) KO1005



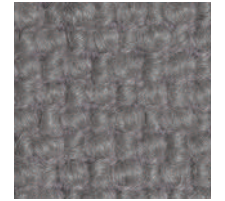
Shizuku (F2) KO1006



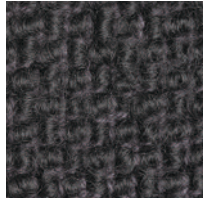
Migiwa (F2) KO2001



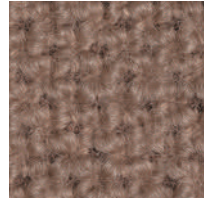
Migiwa (F2) KO2002



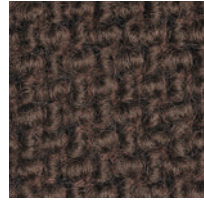
Migiwa (F2) KO2003



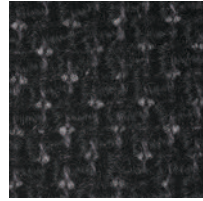
Migiwa (F2) KO2004



Migiwa (F2) KO2005



Migiwa (F2) KO2006



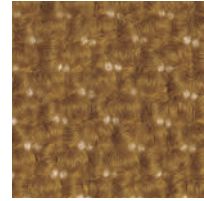
Migiwa (F2) KO2007



Migiwa (F2) KO2008



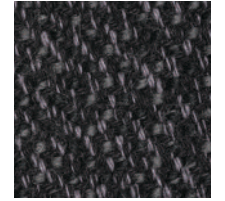
Migiwa (F2) KO2009



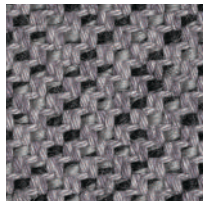
Migiwa (F2) KO2010



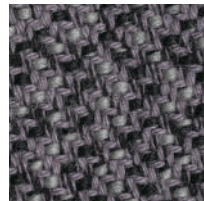
Mikage (F2) KO4001



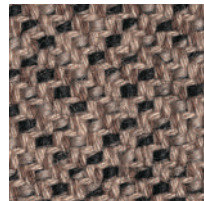
Mikage (F2) KO4002



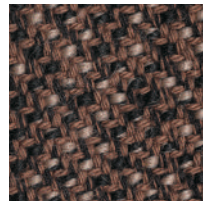
Mikage (F2) KO4003



Mikage (F2) KO4011

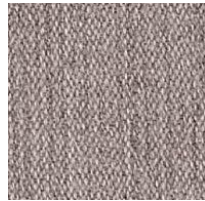


Mikage (F2) KO4005

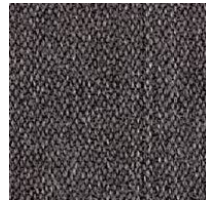


Mikage (F2) KO4006

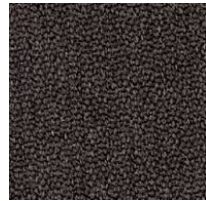
Fabrics



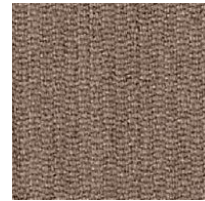
Riff (F1) 13/08



Riff (F1) 12/80



Riff (F1) 07/78



Riff (F1) 05/99



Riff (F1) 06/77



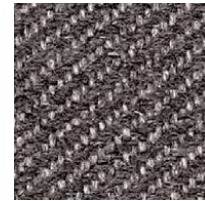
Bergen (F1) 05/09



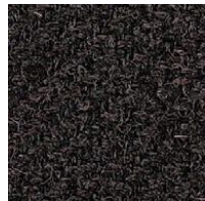
Bergen (F1) 03/07



Bergen (F1) 10/84



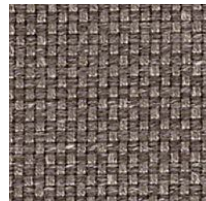
Bergen (F1) 09/86



Bergen (F1) 02/77



Strand (F1) 00



Strand (F1) 75



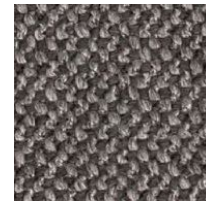
Strand (F1) 77



Ruig (F1) 02



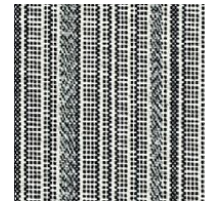
Ruig (F1) 71



Ruig (F1) 78



Ruig (F1) 88



Kokura Stripe 1037



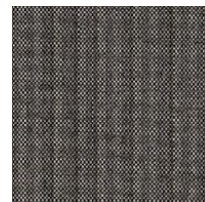
Kokura Stripe (F1) 1036



Kokura Stripe (F1) 1035



Kokura Stripe (F1) 1034



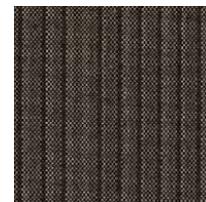
Kokura Stripe (F1) 1033



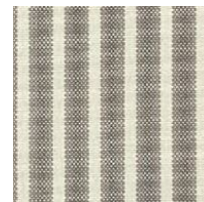
Kokura Stripe (F1) 1032



Kokura Stripe (F1) 1031



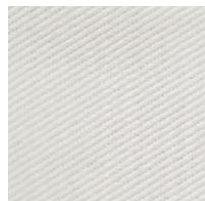
Kokura Stripe (F1) 1030



Kokura Stripe (F1) 1039



Kokura Stripe (F1) 1038



Katsuragi white (F1)



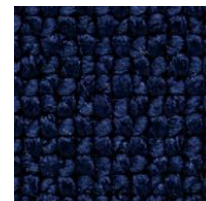
Bolster (F2) 09



Bolster (F2) 75



Bolster (F2) 77



Bolster (F2) 44



Bolster (F2) 80



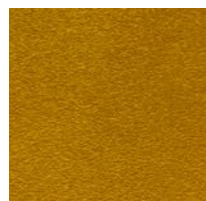
Bolster (F2) 88

Special order

機能性生地や、ラインナップ以外のカラー生地のおオーダーも承ります。



Red



Orange



Yellow



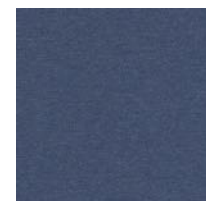
Green



Green 2



Green 3



Blue 1



Blue 2



Blue 3

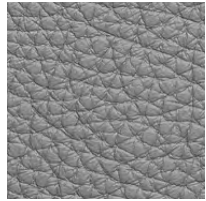
Embossed leather (L1)



40202



40242



40243



40204



40205



40206



40209



40210



40215



40216

Smooth leather (L2)



40110



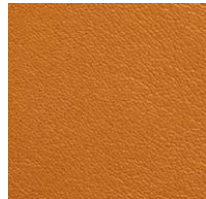
40109



40106



40108



40105



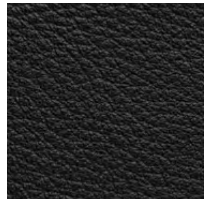
40104



40103



40107



40102



40101