



MA

Designed by Kengo Kuma

ボリュームのある布団を折り曲げて、日本の布団を再解釈した新しいソファが出来ました。MA はオノマトベのマキマキの頭文字の「マ」と、布団を折り曲げた時に生まれる真ん中の隙間の「間」をかけた名前です。隈研吾氏の建築には隙間が存在し、光や風が入り、陰影をもたらし、奥行き感のある豊かな空間を演出します。

ソファの内部にはフェザーを使用し、包み込まれるような座り心地です。ソファカバーの端部は指でつまんだような、自然な柔らかいアウトラインが出来上がりました。また、可動式のメカを背もたれ部分に内蔵し、背もたれを折り曲げた時に自然な皺が入るという意匠性と、ハイバックにもできるという機能性を両立させました。

MA

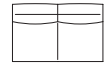
Designed by Kengo Kuma

TIME & STYLE



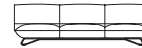
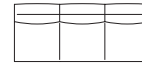
KK-S301 1人掛けソファ
W900×D1024×H727×SH380

鏡面		パイプ レーション		黒皮	
F1	506,000 (460,000)	F1	495,000 (450,000)	F1	429,000 (390,000)
F2	539,000 (490,000)	F2	528,000 (480,000)	F2	462,000 (420,000)
L1	891,000 (810,000)	L1	880,000 (800,000)	L1	814,000 (740,000)
L2	957,000 (870,000)	L2	946,000 (860,000)	L2	880,000 (800,000)



KK-S302 2人掛けソファ
W1600×D1024×H727×SH380

鏡面		パイプ レーション		黒皮	
F1	759,000 (690,000)	F1	748,000 (680,000)	F1	704,000 (640,000)
F2	803,000 (730,000)	F2	792,000 (720,000)	F2	748,000 (680,000)
L1	1,386,000 (1,260,000)	L1	1,375,000 (1,250,000)	L1	1,309,000 (1,190,000)
L2	1,496,000 (1,360,000)	L2	1,485,000 (1,350,000)	L2	1,419,000 (1,290,000)



KK-S303 3人掛けソファ
W2400×D1024×H727×SH380

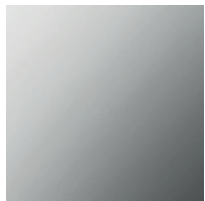
鏡面		パイプ レーション		黒皮	
F1	990,000 (900,000)	F1	979,000 (890,000)	F1	902,000 (820,000)
F2	1,089,000 (990,000)	F2	1,078,000 (980,000)	F2	1,001,000 (910,000)
L1	1,936,000 (1,760,000)	L1	1,925,000 (1,750,000)	L1	1,859,000 (1,690,000)
L2	2,112,000 (1,920,000)	L2	2,101,000 (1,910,000)	L2	2,035,000 (1,850,000)

W (幅)
D (奥行)
H (高さ)
SH (シート高)

寸法単位：mm

価格は日本円
() は税抜き価格

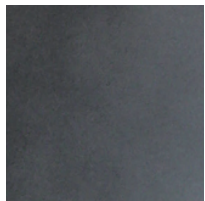
F1 (生地 ランク 1)
F2 (生地 ランク 2)
L1 (革 ランク 1)
L2 (革 ランク 2)



ステンレス
鏡面



ステンレス
パイプレーション



スチール
黒皮

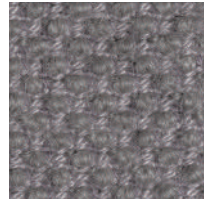
New Fabrics



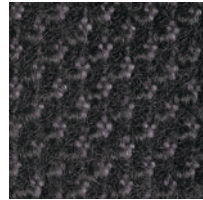
Shizuku (F2) KO1001



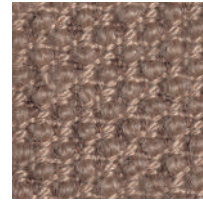
Shizuku (F2) KO1002



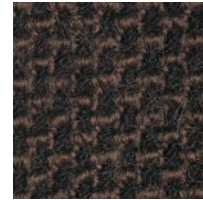
Shizuku (F2) KO1003



Shizuku (F2) KO1004



Shizuku (F2) KO1005



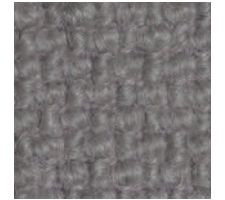
Shizuku (F2) KO1006



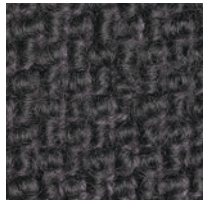
Migiwa (F2) KO2001



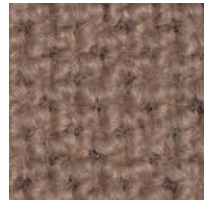
Migiwa (F2) KO2002



Migiwa (F2) KO2003



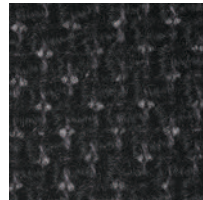
Migiwa (F2) KO2004



Migiwa (F2) KO2005



Migiwa (F2) KO2006



Migiwa (F2) KO2007



Migiwa (F2) KO2008



Migiwa (F2) KO2009



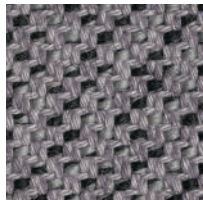
Migiwa (F2) KO2010



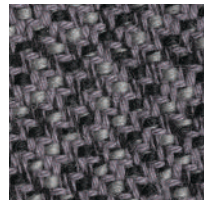
Mikage (F2) KO4001



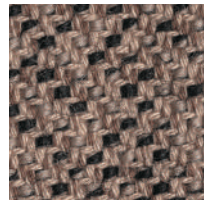
Mikage (F2) KO4002



Mikage (F2) KO4003



Mikage (F2) KO4011

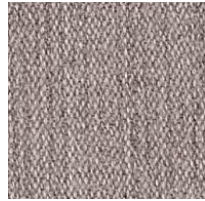


Mikage (F2) KO4005

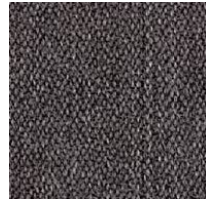


Mikage (F2) KO4006

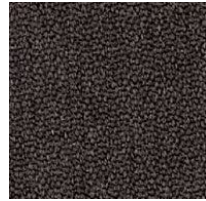
Fabrics



Riff (F1) 13/08



Riff (F1) 12/80



Riff (F1) 07/78



Riff (F1) 05/99



Riff (F1) 06/77



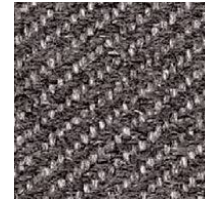
Bergen (F1) 05/09



Bergen (F1) 03/07



Bergen (F1) 10/84



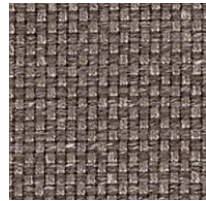
Bergen (F1) 09/86



Bergen (F1) 02/77



Strand (F1) 00



Strand (F1) 75



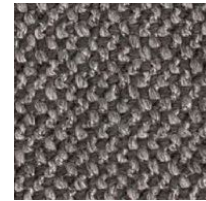
Strand (F1) 77



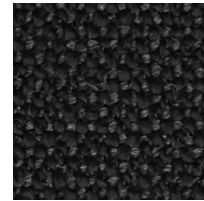
Ruig (F1) 02



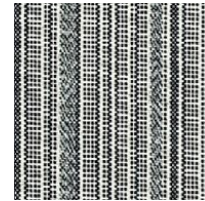
Ruig (F1) 71



Ruig (F1) 78



Ruig (F1) 88



Kokura Stripe 1037



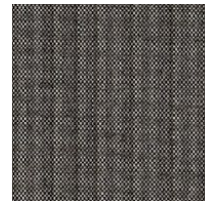
Kokura Stripe (F1) 1036



Kokura Stripe (F1) 1035



Kokura Stripe (F1) 1034



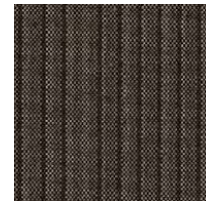
Kokura Stripe (F1) 1033



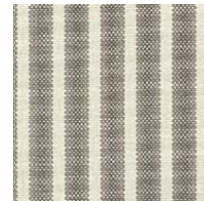
Kokura Stripe (F1) 1032



Kokura Stripe (F1) 1031



Kokura Stripe (F1) 1030



Kokura Stripe (F1) 1039



Kokura Stripe (F1) 1038



Katsuragi white (F1)



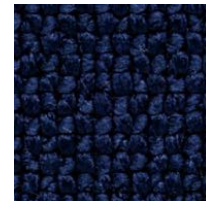
Bolster (F2) 09



Bolster (F2) 75



Bolster (F2) 77



Bolster (F2) 44



Bolster (F2) 80



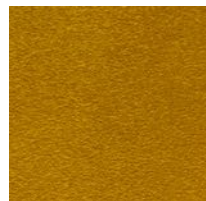
Bolster (F2) 88

Special order

機能性生地や、ラインナップ以外のカラー生地のおオーダーも承ります。



Red



Orange



Yellow



Green



Green 2



Green 3



Blue 1



Blue 2



Blue 3

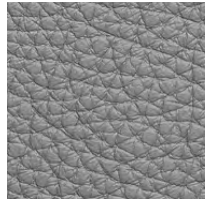
Embossed leather (L1)



40202



40242



40243



40204



40205



40206



40209



40210



40215



40216

Smooth leather (L2)



40110



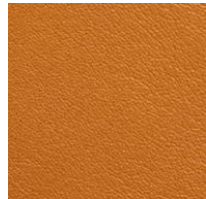
40109



40106



40108



40105



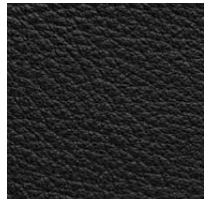
40104



40103



40107



40102



40101