



MA

Designed by Kengo Kuma

The idea for this sofa is based on the shape of a rolled futon (Japanese traditional style bedding). The name “MA” is derived from the initial character of “Ma” from the onomatopoeia maki-maki along with the word “Ma” (space/opening), meaning the open or empty space when a futon is folded into two.

The outline is soft and natural, resembling two pieces of clothes pinched with a finger. In addition, the backrest has a built-in movable mechanism to allow natural wrinkles for stylishness when folded, combined with a functional element to raise the backrest as a high-back sofa.

MA

Designed by Kengo Kuma



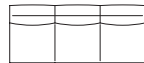
KK-S301 1 seater sofa
W900×D1024×H727×SH380

	<u>Mirror</u>	<u>Vibration</u>	<u>Black</u>
F1	4.530	4.430	3.840
F2	4.830	4.730	4.140
L1	7.980	7.880	7.290
L2	8.570	8.470	7.870



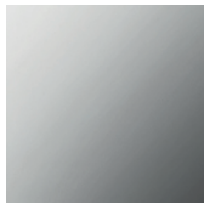
KK-S302 2 seater sofa
W1600×D1024×H727×SH380

	<u>Mirror</u>	<u>Vibration</u>	<u>Black</u>
F1	6.800	6.700	6.550
F2	7.200	7.100	6.950
L1	12.410	12.310	11.970
L2	13.390	13.290	12.960



KK-S303 3 seater sofa
W2400×D1024×H727×SH380

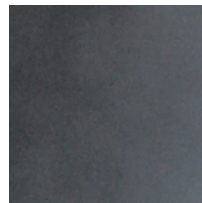
	<u>Mirror</u>	<u>Vibration</u>	<u>Black</u>
F1	8.860	8.770	8.080
F2	9.750	9.650	8.960
L1	17.340	17.240	16.550
L2	18.910	18.810	18.130



Stainless
Mirror finish



Stainless
Vibration finish



Steel
Black oxide coated

TIME & STYLE

W (width)
D (depth)
H (height)
SH (seat height)

Dimensions Unit: mm

Prices in Euro
VAT not included

F1 (Fabric rank 1)
F2 (Fabric rank 2)
L1 (Leather rank 1)
L2 (Leather rank 2)

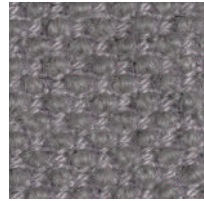
New Fabrics



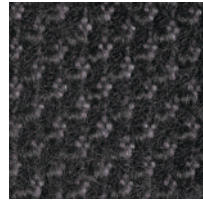
Shizuku (F2) KO1001



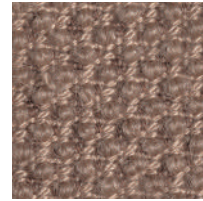
Shizuku (F2) KO1002



Shizuku (F2) KO1003



Shizuku (F2) KO1004



Shizuku (F2) KO1005



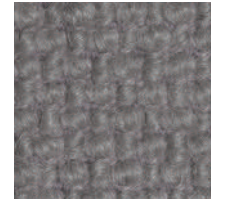
Shizuku (F2) KO1006



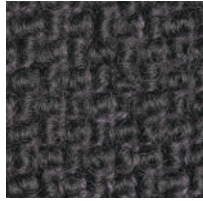
Migiwa (F2) KO2001



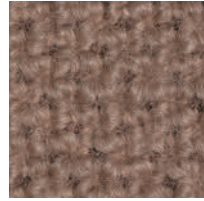
Migiwa (F2) KO2002



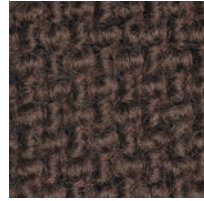
Migiwa (F2) KO2003



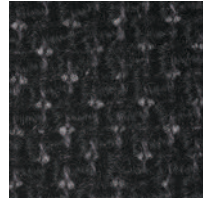
Migiwa (F2) KO2004



Migiwa (F2) KO2005



Migiwa (F2) KO2006



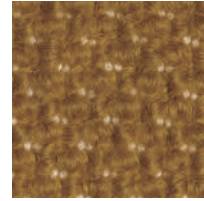
Migiwa (F2) KO2007



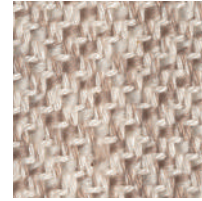
Migiwa (F2) KO2008



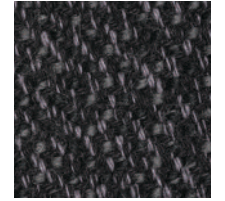
Migiwa (F2) KO2009



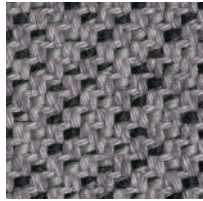
Migiwa (F2) KO2010



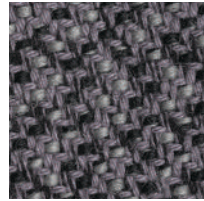
Mikage (F2) KO4001



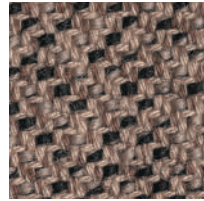
Mikage (F2) KO4002



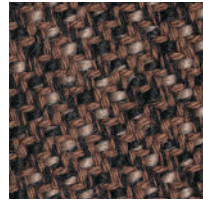
Mikage (F2) KO4003



Mikage (F2) KO4011

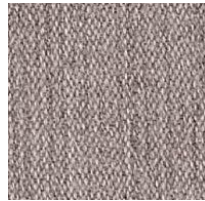


Mikage (F2) KO4005

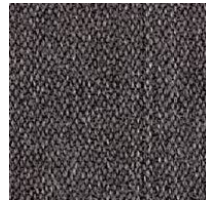


Mikage (F2) KO4006

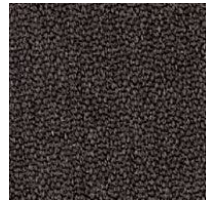
Fabrics



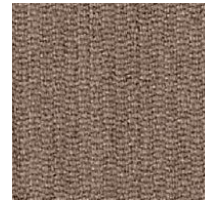
Riff (F1) 13/08



Riff (F1) 12/80



Riff (F1) 07/78



Riff (F1) 05/99



Riff (F1) 06/77



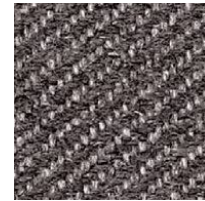
Bergen (F1) 05/09



Bergen (F1) 03/07



Bergen (F1) 10/84



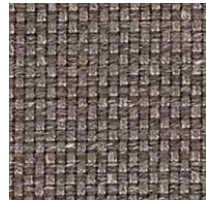
Bergen (F1) 09/86



Bergen (F1) 02/77



Strand (F1) 00



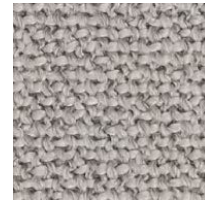
Strand (F1) 75



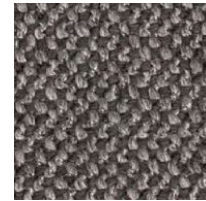
Strand (F1) 77



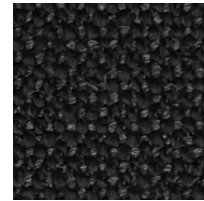
Ruig (F1) 02



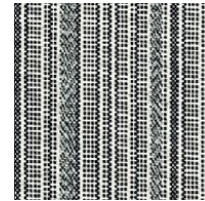
Ruig (F1) 71



Ruig (F1) 78



Ruig (F1) 88



Kokura Stripe(F1) 1037



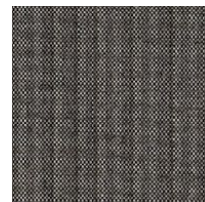
Kokura Stripe (F1) 1036



Kokura Stripe (F1) 1035



Kokura Stripe (F1) 1034



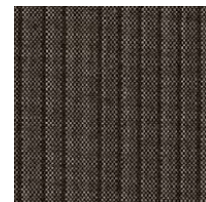
Kokura Stripe (F1) 1033



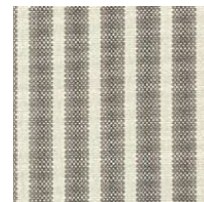
Kokura Stripe (F1) 1032



Kokura Stripe (F1) 1031



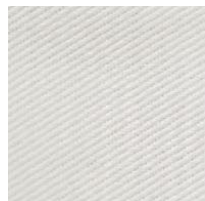
Kokura Stripe (F1) 1030



Kokura Stripe (F1) 1039



Kokura Stripe (F1) 1038



Katsuragi white (F1)



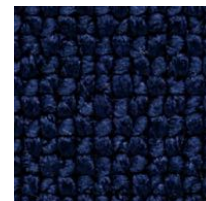
Bolster (F2) 09



Bolster (F2) 75



Bolster (F2) 77



Bolster (F2) 44



Bolster (F2) 80

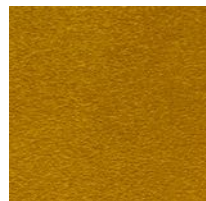


Bolster (F2) 88

Special order



Red



Orange



Yellow



Green



Green 2



Green 3



Blue 1



Blue 2



Blue 3

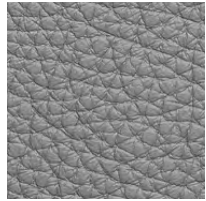
Embossed leather (L1)



40202



40242



40243



40204



40205



40206



40209



40210



40215



40216

Smooth leather (L2)



40110



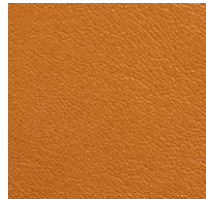
40109



40106



40108



40105



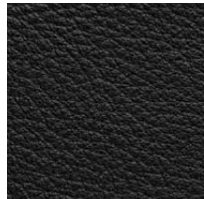
40104



40103



40107



40102



40101