



Leon seamless half arm chair

アームが短くなることで座面が側面から見え、よりスタイリッシュで動きのある佇まいが生まれました。機能面においては、テーブルにセッティングした時に立ち座りのストレスがなく、スムーズな掛け心地が得られます。

また、後脚を繋ぐ座枠に大きなカーブを付けることで背もたれの形状に丸みを持たせ、これまでのアームチェアよりも上質な質感と品格を生み出しています。ふくよかでゆったりと座ることができるようになり、ダイニングチェアとしての機能性を高めることにも繋がりました。

Leon seamless half arm chair



I-108 アームチェア

W533×D571×H737×SH425×AH605

	ブナ		ウォールナット	
F1	121,000	(110,000)	143,000	(130,000)
F2	132,000	(120,000)	154,000	(140,000)
L1	165,000	(150,000)	187,000	(170,000)
L2	176,000	(160,000)	198,000	(180,000)

TIME & STYLE

W (幅)
D (奥行)
H (高さ)
SH (シート高)
AH (アーム高)

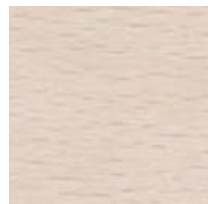
寸法単位：mm

価格は日本円
() は税抜き価格

F1 (生地 ランク 1)
F2 (生地 ランク 2)
L1 (革 ランク 1)
L2 (革 ランク 2)



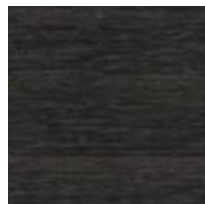
ブナ
ナチュラルホワイト



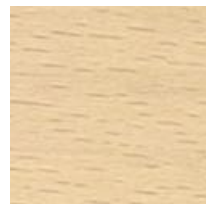
ブナ
スノーホワイト



ブナ
ミディアムグレー



ブナ
チャコールグレー



ブナ
ソープ

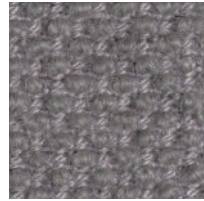
New Fabrics



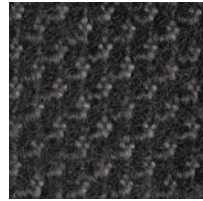
Shizuku (F2) KO1001



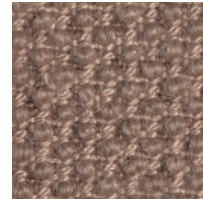
Shizuku (F2) KO1002



Shizuku (F2) KO1003



Shizuku (F2) KO1004



Shizuku (F2) KO1005



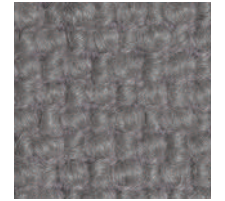
Shizuku (F2) KO1006



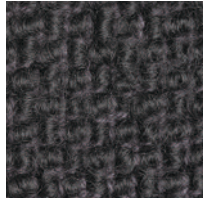
Migiwa (F2) KO2001



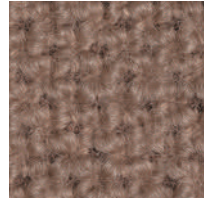
Migiwa (F2) KO2002



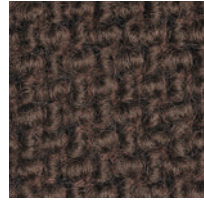
Migiwa (F2) KO2003



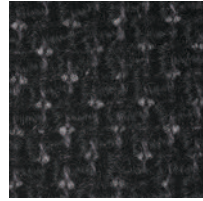
Migiwa (F2) KO2004



Migiwa (F2) KO2005



Migiwa (F2) KO2006



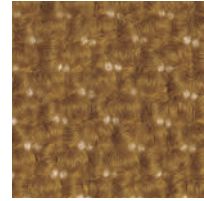
Migiwa (F2) KO2007



Migiwa (F2) KO2008



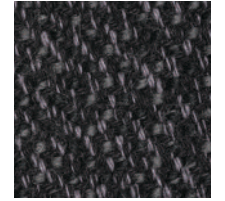
Migiwa (F2) KO2009



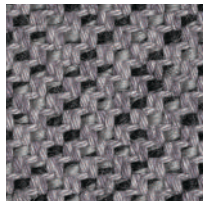
Migiwa (F2) KO2010



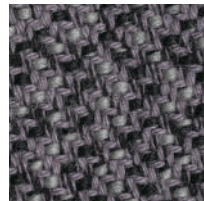
Mikage (F2) KO4001



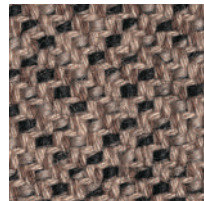
Mikage (F2) KO4002



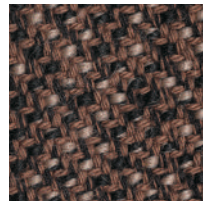
Mikage (F2) KO4003



Mikage (F2) KO4011

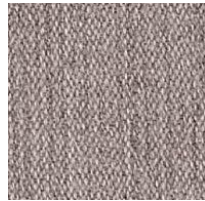


Mikage (F2) KO4005

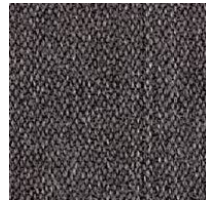


Mikage (F2) KO4006

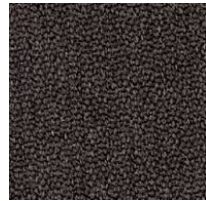
Fabrics



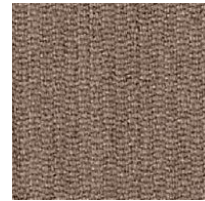
Riff (F1) 13/08



Riff (F1) 12/80



Riff (F1) 07/78



Riff (F1) 05/99



Riff (F1) 06/77



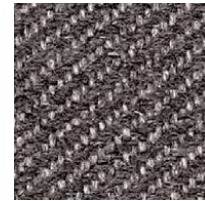
Bergen (F1) 05/09



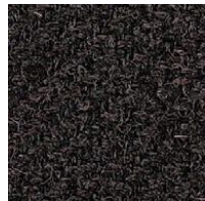
Bergen (F1) 03/07



Bergen (F1) 10/84



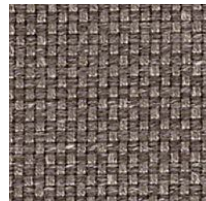
Bergen (F1) 09/86



Bergen (F1) 02/77



Strand (F1) 00



Strand (F1) 75



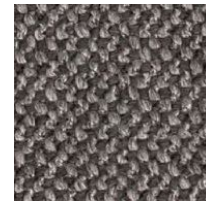
Strand (F1) 77



Ruig (F1) 02



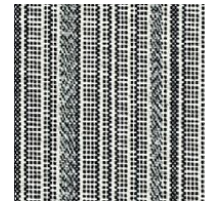
Ruig (F1) 71



Ruig (F1) 78



Ruig (F1) 88



Kokura Stripe(F1) 1037



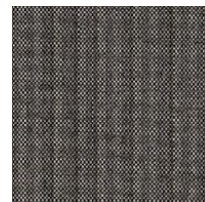
Kokura Stripe (F1) 1036



Kokura Stripe (F1) 1035



Kokura Stripe (F1) 1034



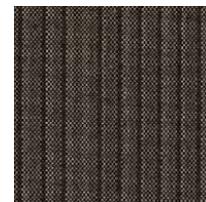
Kokura Stripe (F1) 1033



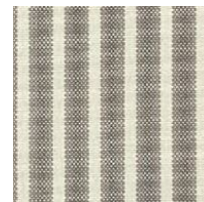
Kokura Stripe (F1) 1032



Kokura Stripe (F1) 1031



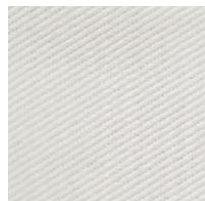
Kokura Stripe (F1) 1030



Kokura Stripe (F1) 1039



Kokura Stripe (F1) 1038



Katsuragi white (F1)



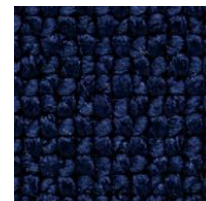
Bolster (F2) 09



Bolster (F2) 75



Bolster (F2) 77



Bolster (F2) 44



Bolster (F2) 80



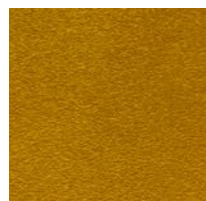
Bolster (F2) 88

Special order

機能性生地や、ラインナップ以外のカラー生地のおオーダーも承ります。



Red



Orange



Yellow



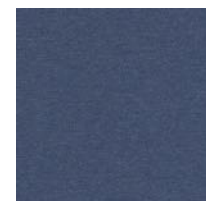
Green



Green 2



Green 3



Blue 1



Blue 2



Blue 3

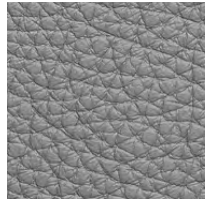
Embossed leather (L1)



40202



40242



40243



40204



40205



40206



40209



40210



40215



40216

Smooth leather (L2)



40110



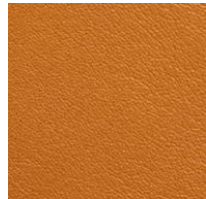
40109



40106



40108



40105



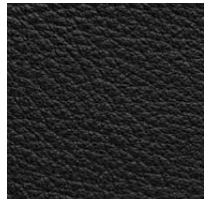
40104



40103



40107



40102



40101