



### Leo seamless armchair

最も大切にすることは、全体を構成する面を出来るだけ繋いでゆくことです。この基本構成をいかに自然に、有機的なディテールで繋ぐことができるかによって、アームチェア全体に一体感が生まれるかが決まります。すっきりとした印象の中にもふくよかさを持たせ、緊張感と柔らかさを同居させました。

ダイニングチェアとしての機能性を重視し、重くなりすぎないように軽量化も考慮しました。張地の柔らかさと、意匠性としての緊張感を持った品格のある佇まいを目指し、アームチェアのひとつの答えとなりました。

## Leo seamless armchair



I-107 アームチェア

W533×D571×H737×SH425×AH600

	ブナ		ウォールナット	
F1	121,000	(110,000)	143,000	(130,000)
F2	132,000	(120,000)	154,000	(140,000)
L1	165,000	(150,000)	187,000	(170,000)
L2	176,000	(160,000)	198,000	(180,000)

## TIME & STYLE

W (幅)  
D (奥行)  
H (高さ)  
SH (シート高)  
AH (アーム高)

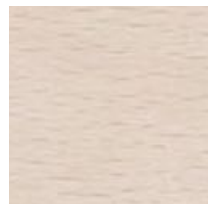
寸法単位：mm

価格は日本円  
( ) は税抜き価格

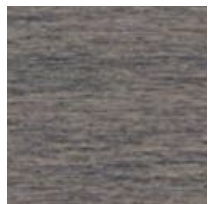
F1 (生地 ランク 1)  
F2 (生地 ランク 2)  
L1 (革 ランク 1)  
L2 (革 ランク 2)



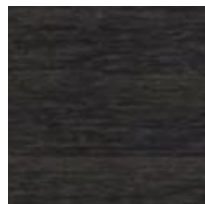
ブナ  
ナチュラルホワイト



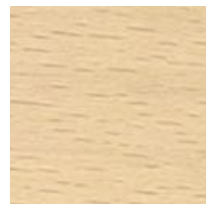
ブナ  
スノーホワイト



ブナ  
ミディアムグレー



ブナ  
チャコールグレー



ブナ  
ソーブ

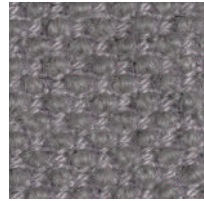
New Fabrics



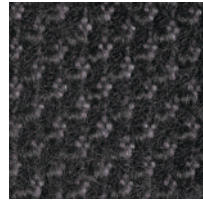
Shizuku (F2) KO1001



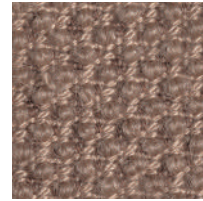
Shizuku (F2) KO1002



Shizuku (F2) KO1003



Shizuku (F2) KO1004



Shizuku (F2) KO1005



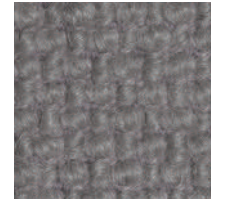
Shizuku (F2) KO1006



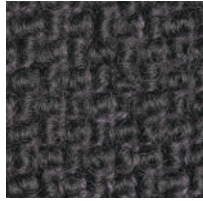
Migiwa (F2) KO2001



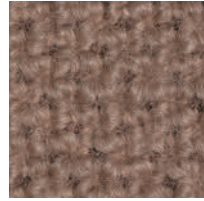
Migiwa (F2) KO2002



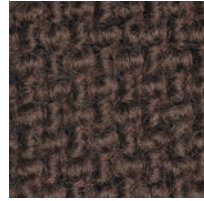
Migiwa (F2) KO2003



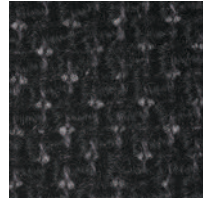
Migiwa (F2) KO2004



Migiwa (F2) KO2005



Migiwa (F2) KO2006



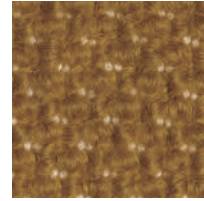
Migiwa (F2) KO2007



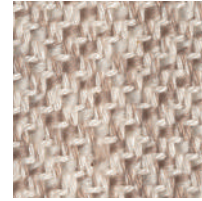
Migiwa (F2) KO2008



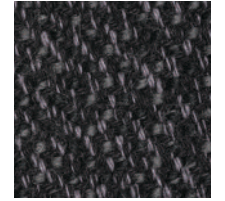
Migiwa (F2) KO2009



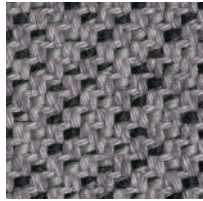
Migiwa (F2) KO2010



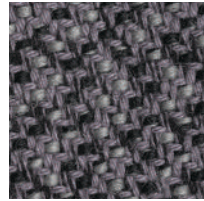
Mikage (F2) KO4001



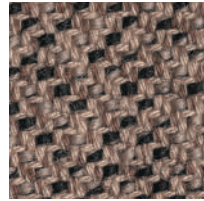
Mikage (F2) KO4002



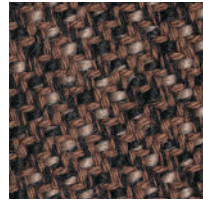
Mikage (F2) KO4003



Mikage (F2) KO4011

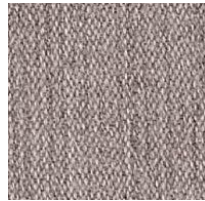


Mikage (F2) KO4005

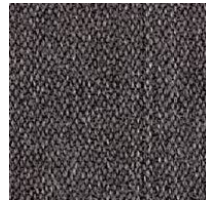


Mikage (F2) KO4006

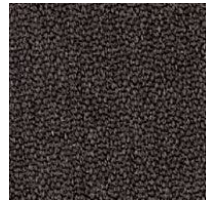
Fabrics



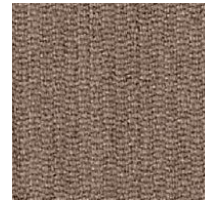
Riff (F1) 13/08



Riff (F1) 12/80



Riff (F1) 07/78



Riff (F1) 05/99



Riff (F1) 06/77



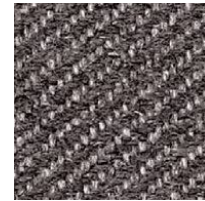
Bergen (F1) 05/09



Bergen (F1) 03/07



Bergen (F1) 10/84



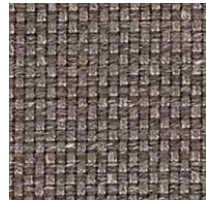
Bergen (F1) 09/86



Bergen (F1) 02/77



Strand (F1) 00



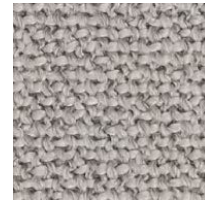
Strand (F1) 75



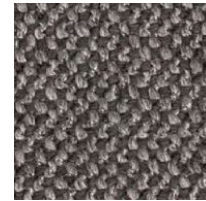
Strand (F1) 77



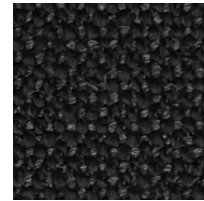
Ruig (F1) 02



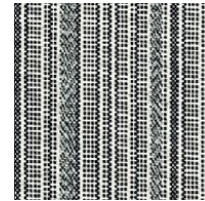
Ruig (F1) 71



Ruig (F1) 78



Ruig (F1) 88



Kokura Stripe(F1) 1037



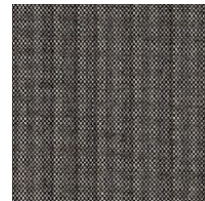
Kokura Stripe (F1) 1036



Kokura Stripe (F1) 1035



Kokura Stripe (F1) 1034



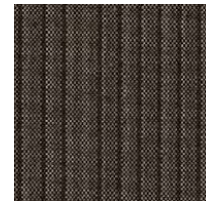
Kokura Stripe (F1) 1033



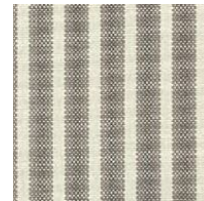
Kokura Stripe (F1) 1032



Kokura Stripe (F1) 1031



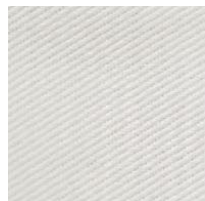
Kokura Stripe (F1) 1030



Kokura Stripe (F1) 1039



Kokura Stripe (F1) 1038



Katsuragi white (F1)



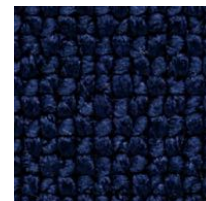
Bolster (F2) 09



Bolster (F2) 75



Bolster (F2) 77



Bolster (F2) 44



Bolster (F2) 80



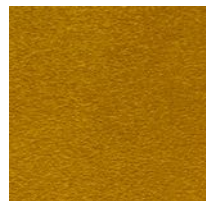
Bolster (F2) 88

Special order

機能性生地や、ラインナップ以外のカラー生地のおオーダーも承ります。



Red



Orange



Yellow



Green



Green 2



Green 3



Blue 1



Blue 2



Blue 3

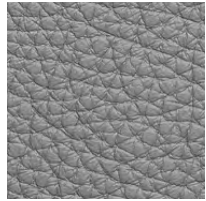
Embossed leather (L1)



40202



40242



40243



40204



40205



40206



40209



40210



40215



40216

Smooth leather (L2)



40110



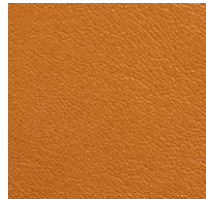
40109



40106



40108



40105



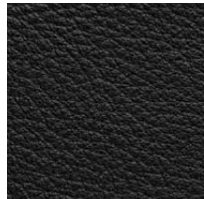
40104



40103



40107



40102



40101