



KA

Designed by Kengo Kuma

KA sofa was designed for a project by Kengo Kuma. It is indeed a product very closely related to the architecture designed by this architect. His architecture rarely has flat, horizontal ceilings and walls. KA sofa, consists entirely of angled surfaces besides the seating surface in line with his architectural design.

While maintaining the sharpness of the end shape, one of the challenges was to combine a contradictory element of the cushioned surface needed for sofas. The sofa is reminiscent of a sculpture with a trigonal pyramid floating in the air.

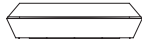
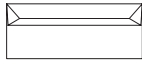
KA

Designed by Kengo Kuma



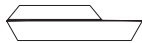
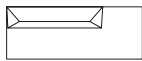
KK-S102 2 seater sofa
W1600×D925×H620×SH365

	<u>Mirror</u>	<u>Vibration</u>	<u>Black</u>
F1	7.570	7.460	7.050
F2	7.980	7.870	7.470
L1	11.770	11.660	11.250
L2	12.480	12.370	11.960



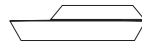
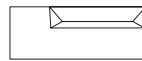
KK-S103 3 seater sofa
W2400×D925×H620×SH365

	<u>Mirror</u>	<u>Vibration</u>	<u>Black</u>
F1	9.930	9.820	9.000
F2	10.430	10.330	9.510
L1	15.550	15.440	14.620
L2	16.480	16.370	15.550



KK-S104L couch ship
W2400×D925×H620×SH365

	<u>Mirror</u>	<u>Vibration</u>	<u>Black</u>
F1	10.720	10.630	9.990
F2	11.270	11.180	10.540
L1	15.400	15.300	14.660
L2	16.680	16.590	15.950



KK-S104R couch ship
W2400×D925×H620×SH365

	<u>Mirror</u>	<u>Vibration</u>	<u>Black</u>
F1	10.720	10.630	9.990
F2	11.270	11.180	10.540
L1	15.400	15.300	14.660
L2	16.680	16.590	15.950

TIME & STYLE

W (width)
D (depth)
H (height)
SH (seat height)

Dimensions Unit: mm

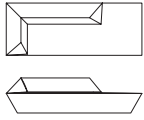
Prices in Euro
VAT not included

F1 (Fabric rank 1)
F2 (Fabric rank 2)
L1 (Leather rank 1)
L2 (Leather rank 2)

KA

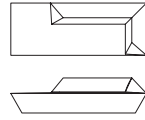
Designed by Kengo Kuma

TIME & STYLE



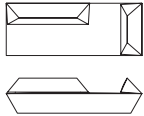
KK-S105L corner sofa
W2400×D925×H620×SH365

	<u>Mirror</u>	<u>Vibration</u>	<u>Black</u>
F1	12.830	12.740	12.100
F2	13.380	13.290	12.650
L1	17.500	17.410	16.770
L2	18.790	18.700	18.050



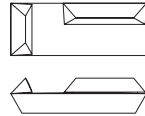
KK-S105R corner sofa
W2400×D925×H620×SH365

	<u>Mirror</u>	<u>Vibration</u>	<u>Black</u>
F1	12.830	12.740	12.100
F2	13.380	13.290	12.650
L1	17.500	17.410	16.770
L2	18.790	18.700	18.050



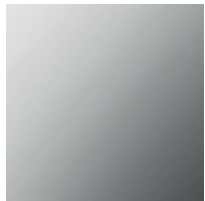
KK-S106L couch island
W2400×D925×H620×SH365

	<u>Mirror</u>	<u>Vibration</u>	<u>Black</u>
F1	11.550	11.450	10.810
F2	12.100	12.000	11.360
L1	16.220	16.130	15.490
L2	17.500	17.410	16.770



KK-S106R couch island
W2400×D925×H620×SH365

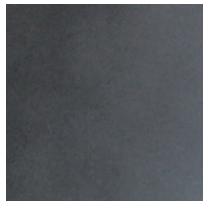
	<u>Mirror</u>	<u>Vibration</u>	<u>Black</u>
F1	11.550	11.450	10.810
F2	12.100	12.000	11.360
L1	16.220	16.130	15.490
L2	17.500	17.410	16.770



Stainless
Mirror finish



Stainless
Vibration finish



Steel
Black oxide coated

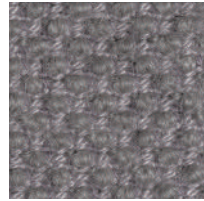
New Fabrics



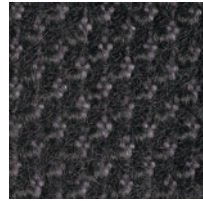
Shizuku (F2) KO1001



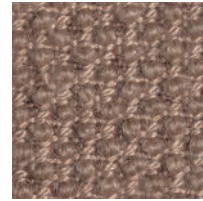
Shizuku (F2) KO1002



Shizuku (F2) KO1003



Shizuku (F2) KO1004



Shizuku (F2) KO1005



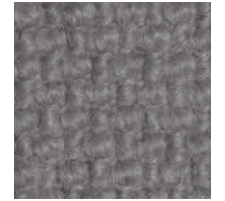
Shizuku (F2) KO1006



Migiwa (F2) KO2001



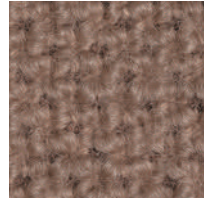
Migiwa (F2) KO2002



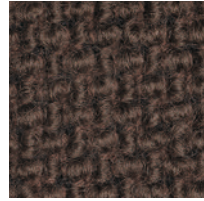
Migiwa (F2) KO2003



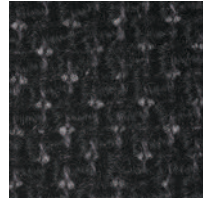
Migiwa (F2) KO2004



Migiwa (F2) KO2005



Migiwa (F2) KO2006



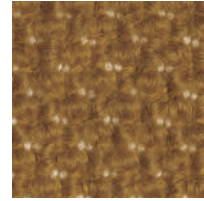
Migiwa (F2) KO2007



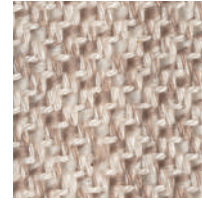
Migiwa (F2) KO2008



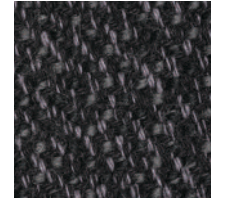
Migiwa (F2) KO2009



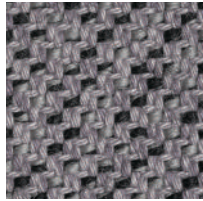
Migiwa (F2) KO2010



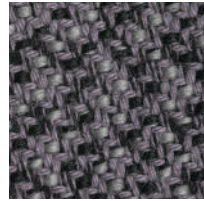
Mikage (F2) KO4001



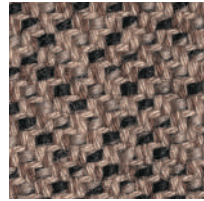
Mikage (F2) KO4002



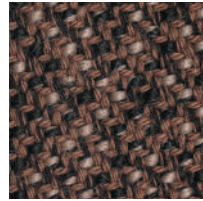
Mikage (F2) KO4003



Mikage (F2) KO4011

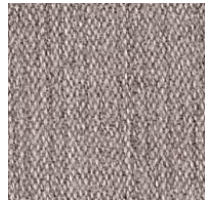


Mikage (F2) KO4005

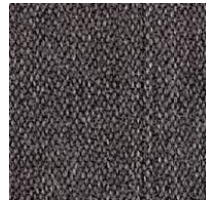


Mikage (F2) KO4006

Fabrics



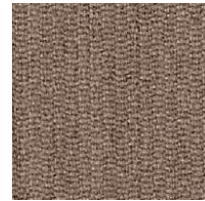
Riff (F1) 13/08



Riff (F1) 12/80



Riff (F1) 07/78



Riff (F1) 05/99



Riff (F1) 06/77



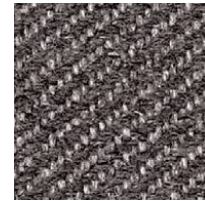
Bergen (F1) 05/09



Bergen (F1) 03/07



Bergen (F1) 10/84



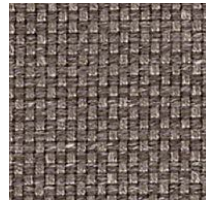
Bergen (F1) 09/86



Bergen (F1) 02/77



Strand (F1) 00



Strand (F1) 75



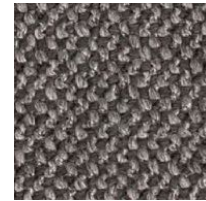
Strand (F1) 77



Ruig (F1) 02



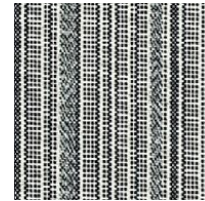
Ruig (F1) 71



Ruig (F1) 78



Ruig (F1) 88



Kokura Stripe(F1) 1037



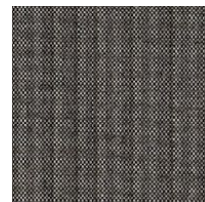
Kokura Stripe (F1) 1036



Kokura Stripe (F1) 1035



Kokura Stripe (F1) 1034



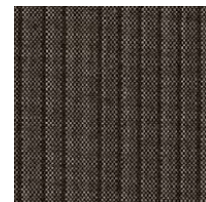
Kokura Stripe (F1) 1033



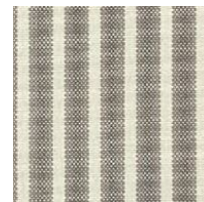
Kokura Stripe (F1) 1032



Kokura Stripe (F1) 1031



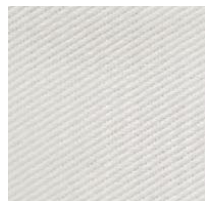
Kokura Stripe (F1) 1030



Kokura Stripe (F1) 1039



Kokura Stripe (F1) 1038



Katsuragi white (F1)



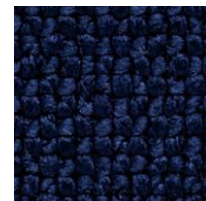
Bolster (F2) 09



Bolster (F2) 75



Bolster (F2) 77



Bolster (F2) 44



Bolster (F2) 80

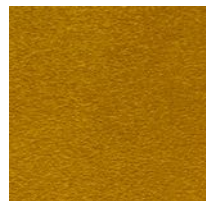


Bolster (F2) 88

Special order



Red



Orange



Yellow



Green



Green 2



Green 3



Blue 1



Blue 2



Blue 3

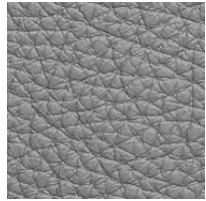
Embossed leather (L1)



40202



40242



40243



40204



40205



40206



40209



40210



40215



40216

Smooth leather (L2)



40110



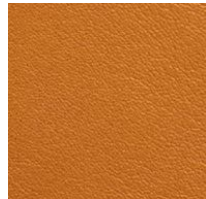
40109



40106



40108



40105



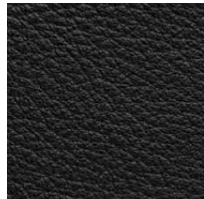
40104



40103



40107



40102



40101