



Icarus wings - steel legs

身体を預け、ゆったりと過ごすことができるよう、座面クッションや内側の背、腰の部分にはフェザーを使用しているので、座った時の沈み込みやホールド感が連動し、エレガントな寛ぎの時間を届けます。モールドウレタンによる有機的なフォルムが、柔らかく控えめな姿のラウンジチェアを実現させました。

金属の回転脚は富山県高岡市の鋳物技術を採用し、静かな佇まいです。

Icarus wings - steel legs



I-801B ラウンジチェア
W968×D862×H1044×SH430×AH565

スチール

F1	572,000	(520,000)
F2	594,000	(540,000)
L1	748,000	(680,000)
L2	803,000	(730,000)



I-802B ラウンジチェア
W968×D862×H1044×SH430×AH565

スチール

F1	594,000	(540,000)
F2	616,000	(560,000)
L1	770,000	(700,000)
L2	825,000	(750,000)

TIME & STYLE

W (幅)
D (奥行)
H (高さ)
SH (シート高)
AH (アーム高)

寸法単位：mm

価格は日本円
() は税抜き価格

F1 (生地 ランク 1)
F2 (生地 ランク 2)
L1 (革 ランク 1)
L2 (革 ランク 2)

Legs finishes



スチール
ブラック

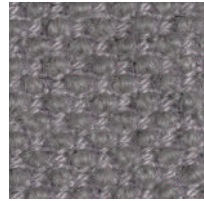
New Fabrics



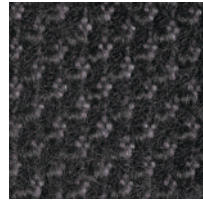
Shizuku (F2) KO1001



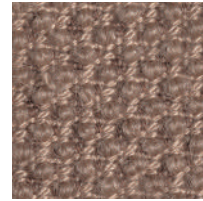
Shizuku (F2) KO1002



Shizuku (F2) KO1003



Shizuku (F2) KO1004



Shizuku (F2) KO1005



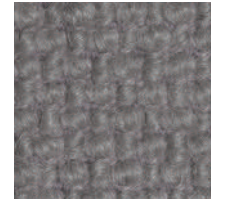
Shizuku (F2) KO1006



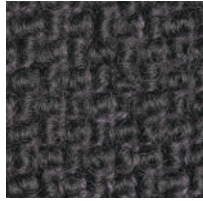
Migiwa (F2) KO2001



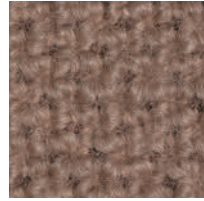
Migiwa (F2) KO2002



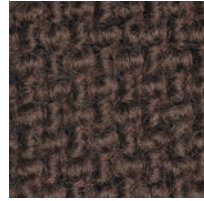
Migiwa (F2) KO2003



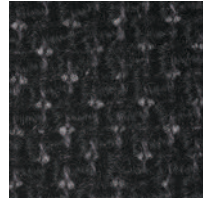
Migiwa (F2) KO2004



Migiwa (F2) KO2005



Migiwa (F2) KO2006



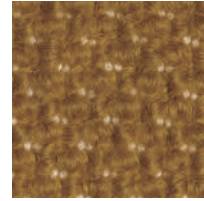
Migiwa (F2) KO2007



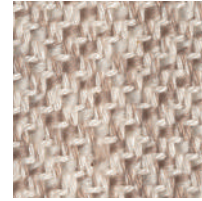
Migiwa (F2) KO2008



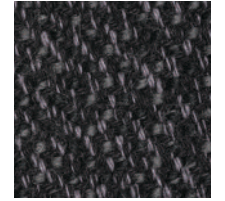
Migiwa (F2) KO2009



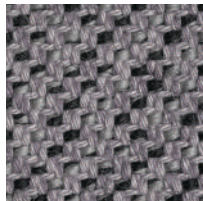
Migiwa (F2) KO2010



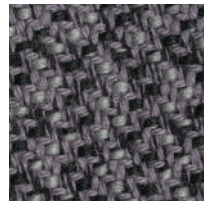
Mikage (F2) KO4001



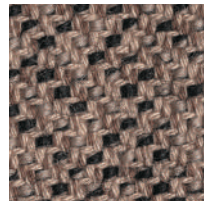
Mikage (F2) KO4002



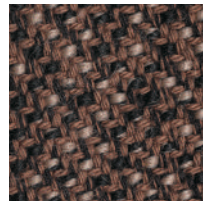
Mikage (F2) KO4003



Mikage (F2) KO4011

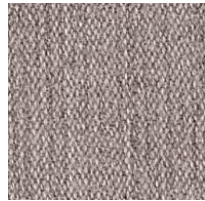


Mikage (F2) KO4005

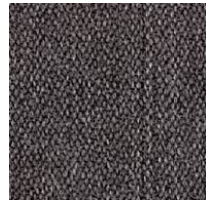


Mikage (F2) KO4006

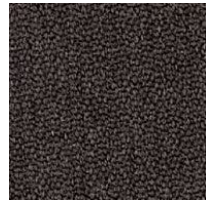
Fabrics



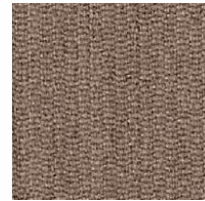
Riff (F1) 13/08



Riff (F1) 12/80



Riff (F1) 07/78



Riff (F1) 05/99



Riff (F1) 06/77



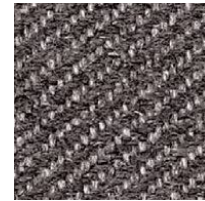
Bergen (F1) 05/09



Bergen (F1) 03/07



Bergen (F1) 10/84



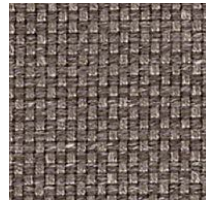
Bergen (F1) 09/86



Bergen (F1) 02/77



Strand (F1) 00



Strand (F1) 75



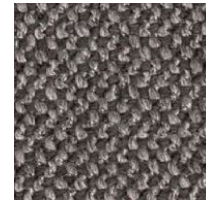
Strand (F1) 77



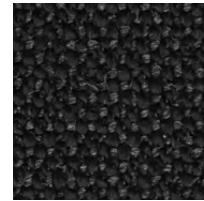
Ruig (F1) 02



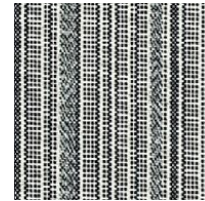
Ruig (F1) 71



Ruig (F1) 78



Ruig (F1) 88



Kokura Stripe 1037



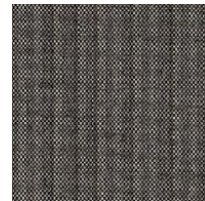
Kokura Stripe (F1) 1036



Kokura Stripe (F1) 1035



Kokura Stripe (F1) 1034



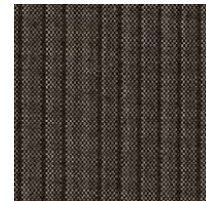
Kokura Stripe (F1) 1033



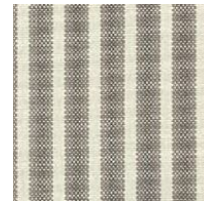
Kokura Stripe (F1) 1032



Kokura Stripe (F1) 1031



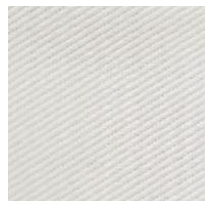
Kokura Stripe (F1) 1030



Kokura Stripe (F1) 1039



Kokura Stripe (F1) 1038



Katsuragi white (F1)



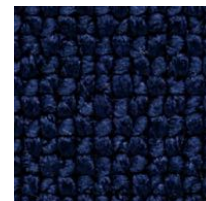
Bolster (F2) 09



Bolster (F2) 75



Bolster (F2) 77



Bolster (F2) 44



Bolster (F2) 80



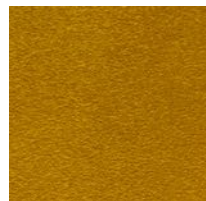
Bolster (F2) 88

Special order

機能性生地や、ラインナップ以外のカラー生地のおオーダーも承ります。



Red



Orange



Yellow



Green



Green 2



Green 3



Blue 1



Blue 2



Blue 3

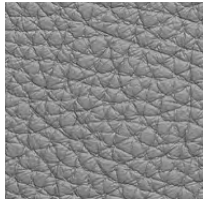
Embossed leather (L1)



40202



40242



40243



40204



40205



40206



40209



40210



40215



40216

Smooth leather (L2)



40110



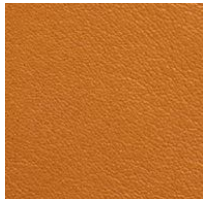
40109



40106



40108



40105



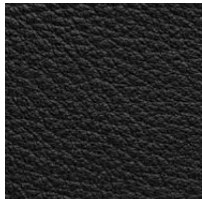
40104



40103



40107



40102



40101