



FU

Designed by Kengo Kuma

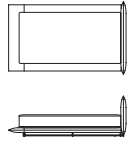
Following the design concept of the FU sofa, which appears to consist of two zabutons, this bed is reminiscent of an over-sized zabuton on a tatami mat.

With the upright design of the headboard, the bed can be neatly placed against the wall, or serve a double purpose to subtly partition the bed-room. The bed frame is shaped as if its edges are pinched shut, adding a unique look while balancing its soft and sharp features. Due to the short legs, the frame that holds the mattress appears to float slightly off the floor.

FU

Designed by Kengo Kuma

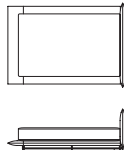
TIME & STYLE



KK-B201 single bed
W1390×D2251×H769

Black

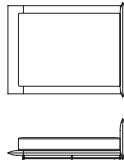
F1	6.410
F2	6.690
L1	8.520
L2	9.070



KK-B202 semi double bed
W1610×D2251×H769

Black

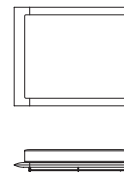
F1	7.150
F2	7.420
L1	9.250
L2	9.800



KK-B203 double bed
W1810×D2251×H769

Black

F1	7.880
F2	8.150
L1	9.990
L2	10.540



KK-B204 queen bed
W2010×D2251×H769

Black

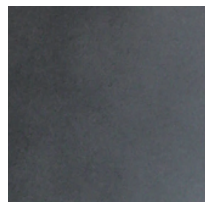
F1	8.610
F2	8.890
L1	11.090
L2	11.820

W (width)
D (depth)
H (height)

Dimensions Unit: mm

Prices in Euro
VAT not included

F1 (Fabric rank 1)
F2 (Fabric rank 2)
L1 (Leather rank 1)
L2 (Leather rank 2)



Steel
Black oxide coated

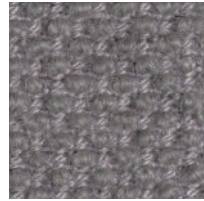
New Fabrics



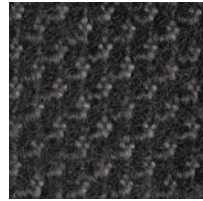
Shizuku (F2) KO1001



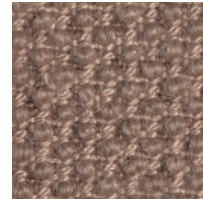
Shizuku (F2) KO1002



Shizuku (F2) KO1003



Shizuku (F2) KO1004



Shizuku (F2) KO1005



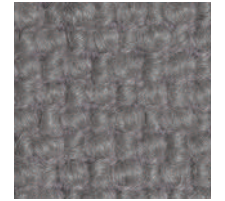
Shizuku (F2) KO1006



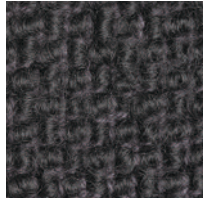
Migiwa (F2) KO2001



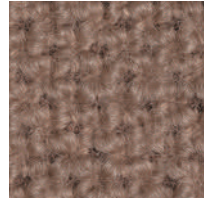
Migiwa (F2) KO2002



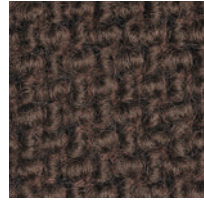
Migiwa (F2) KO2003



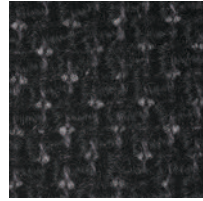
Migiwa (F2) KO2004



Migiwa (F2) KO2005



Migiwa (F2) KO2006



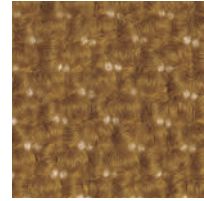
Migiwa (F2) KO2007



Migiwa (F2) KO2008



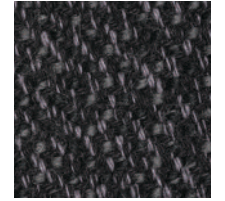
Migiwa (F2) KO2009



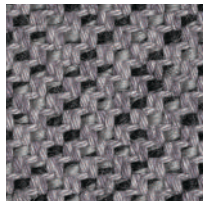
Migiwa (F2) KO2010



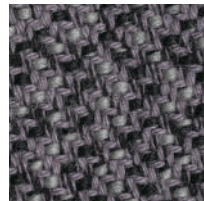
Mikage (F2) KO4001



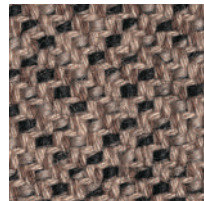
Mikage (F2) KO4002



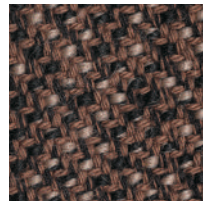
Mikage (F2) KO4003



Mikage (F2) KO4011

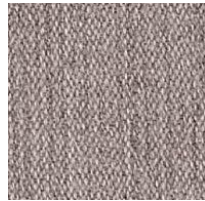


Mikage (F2) KO4005

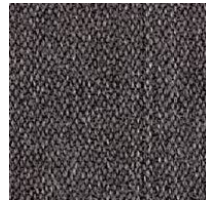


Mikage (F2) KO4006

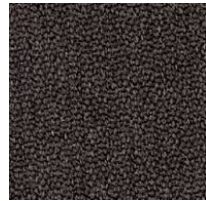
Fabrics



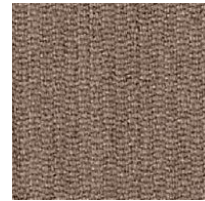
Riff (F1) 13/08



Riff (F1) 12/80



Riff (F1) 07/78



Riff (F1) 05/99



Riff (F1) 06/77



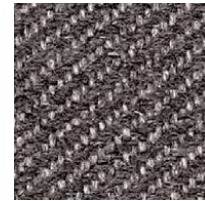
Bergen (F1) 05/09



Bergen (F1) 03/07



Bergen (F1) 10/84



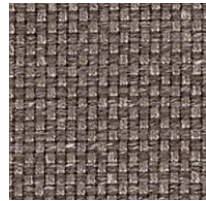
Bergen (F1) 09/86



Bergen (F1) 02/77



Strand (F1) 00



Strand (F1) 75



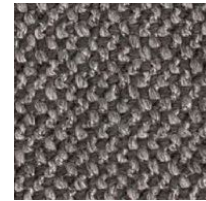
Strand (F1) 77



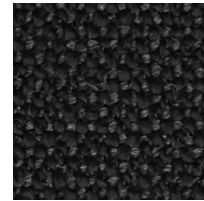
Ruig (F1) 02



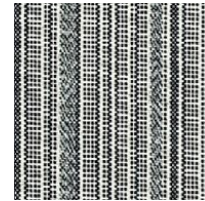
Ruig (F1) 71



Ruig (F1) 78



Ruig (F1) 88



Kokura Stripe(F1) 1037



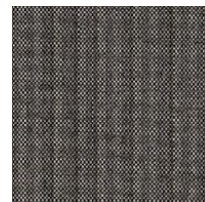
Kokura Stripe (F1) 1036



Kokura Stripe (F1) 1035



Kokura Stripe (F1) 1034



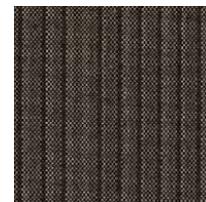
Kokura Stripe (F1) 1033



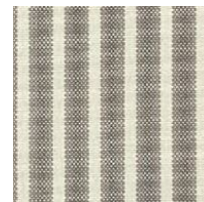
Kokura Stripe (F1) 1032



Kokura Stripe (F1) 1031



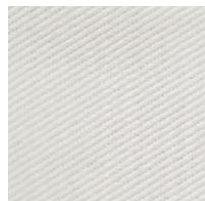
Kokura Stripe (F1) 1030



Kokura Stripe (F1) 1039



Kokura Stripe (F1) 1038



Katsuragi white (F1)



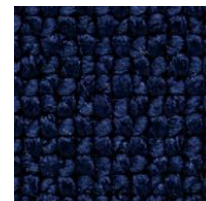
Bolster (F2) 09



Bolster (F2) 75



Bolster (F2) 77



Bolster (F2) 44



Bolster (F2) 80



Bolster (F2) 88

Special order



Red



Orange



Yellow



Green



Green 2



Green 3



Blue 1



Blue 2



Blue 3

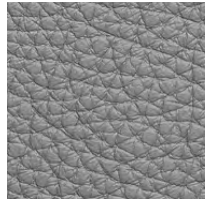
Embossed leather (L1)



40202



40242



40243



40204



40205



40206



40209



40210



40215



40216

Smooth leather (L2)



40110



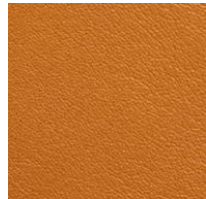
40109



40106



40108



40105



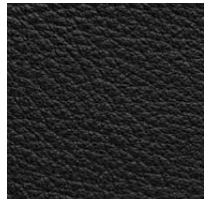
40104



40103



40107



40102



40101