



FU

Designed by Kengo Kuma

「座布団を2枚組み合わせたようなソファが出来ないか」。そんな隈研吾氏の依頼から開発が始まりました。座布団の持つ薄さや軽やかさを表現するため、座面の中央部の膨らみから先端にかけて収束してゆく、有機的でシャープなラインを出すことが必要でした。一般的にソファでは使われないゴム製樹脂を採用することでシャープな形状を保ちながら適度なクッション性を実現しました。カバーの縫製にはロックミシンのステッチを採用し、座面の中央部から先端にかけて滑らかな曲線で繋ぎ、表情のある端部が出来上がりました。背は床から少し浮かせて床との接地面に空間を作っています。

FU

Designed by Kengo Kuma

TIME & STYLE



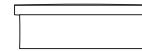
KK-S201 1人掛けソファ
W900×D785×H750×SH400

	鏡面	パイプ レージョン	黒皮
F1	363,000 (330,000)	352,000 (320,000)	319,000 (290,000)
F2	385,000 (350,000)	374,000 (340,000)	341,000 (310,000)
L1	605,000 (550,000)	594,000 (540,000)	561,000 (510,000)
L2	660,000 (600,000)	649,000 (590,000)	605,000 (550,000)



KK-S202 2人掛けソファ
W1600×D785×H750×SH400

	鏡面	パイプ レージョン	黒皮
F1	506,000 (460,000)	495,000 (450,000)	440,000 (400,000)
F2	539,000 (490,000)	528,000 (480,000)	473,000 (430,000)
L1	847,000 (770,000)	836,000 (760,000)	781,000 (710,000)
L2	902,000 (820,000)	891,000 (810,000)	836,000 (760,000)



KK-S203 3人掛けソファ
W2400×D785×H750×SH400

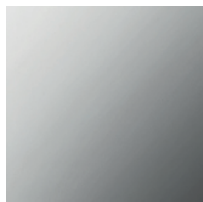
	鏡面	パイプ レージョン	黒皮
F1	682,000 (620,000)	671,000 (610,000)	583,000 (530,000)
F2	737,000 (670,000)	726,000 (660,000)	638,000 (580,000)
L1	1,221,000 (1,110,000)	1,210,000 (1,100,000)	1,122,000 (1,020,000)
L2	1,309,000 (1,190,000)	1,298,000 (1,180,000)	1,210,000 (1,100,000)

W (幅)
D (奥行)
H (高さ)
SH (シート高)

寸法単位：mm

価格は日本円
() は税抜き価格

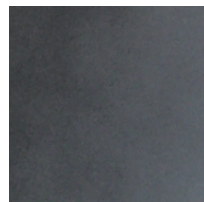
F1 (生地 ランク 1)
F2 (生地 ランク 2)
L1 (革 ランク 1)
L2 (革 ランク 2)



ステンレス
鏡面



ステンレス
パイプレーション



スチール
黒皮

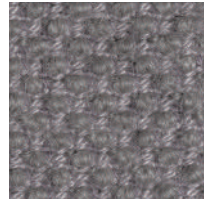
New Fabrics



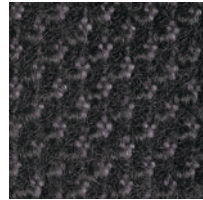
Shizuku (F2) KO1001



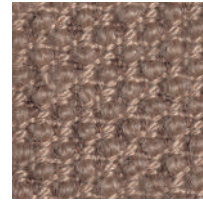
Shizuku (F2) KO1002



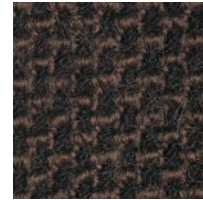
Shizuku (F2) KO1003



Shizuku (F2) KO1004



Shizuku (F2) KO1005



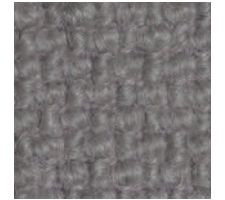
Shizuku (F2) KO1006



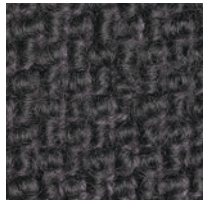
Migiwa (F2) KO2001



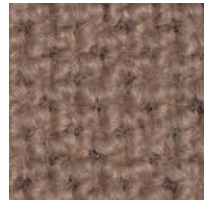
Migiwa (F2) KO2002



Migiwa (F2) KO2003



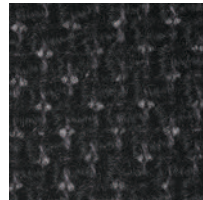
Migiwa (F2) KO2004



Migiwa (F2) KO2005



Migiwa (F2) KO2006



Migiwa (F2) KO2007



Migiwa (F2) KO2008



Migiwa (F2) KO2009



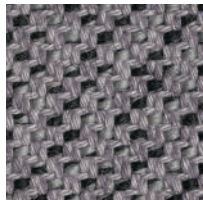
Migiwa (F2) KO2010



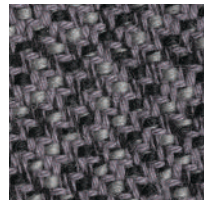
Mikage (F2) KO4001



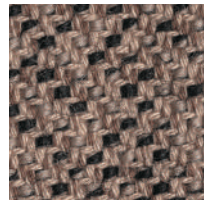
Mikage (F2) KO4002



Mikage (F2) KO4003



Mikage (F2) KO4011

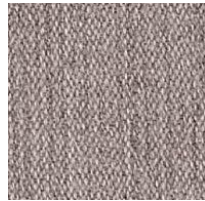


Mikage (F2) KO4005

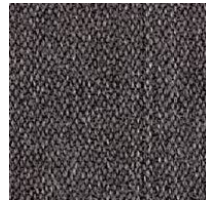


Mikage (F2) KO4006

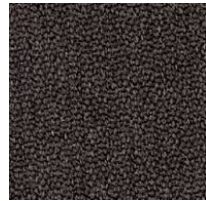
Fabrics



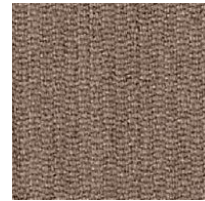
Riff (F1) 13/08



Riff (F1) 12/80



Riff (F1) 07/78



Riff (F1) 05/99



Riff (F1) 06/77



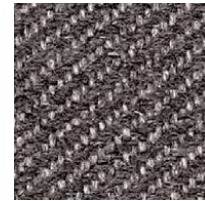
Bergen (F1) 05/09



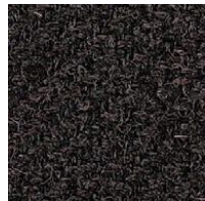
Bergen (F1) 03/07



Bergen (F1) 10/84



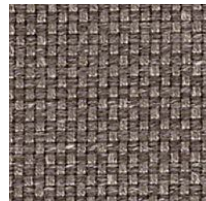
Bergen (F1) 09/86



Bergen (F1) 02/77



Strand (F1) 00



Strand (F1) 75



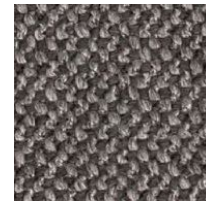
Strand (F1) 77



Ruig (F1) 02



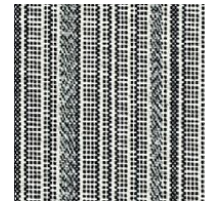
Ruig (F1) 71



Ruig (F1) 78



Ruig (F1) 88



Kokura Stripe 1037



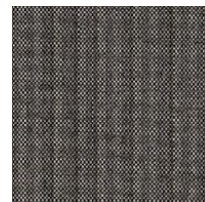
Kokura Stripe (F1) 1036



Kokura Stripe (F1) 1035



Kokura Stripe (F1) 1034



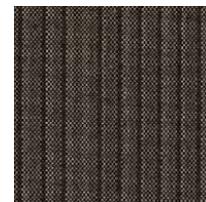
Kokura Stripe (F1) 1033



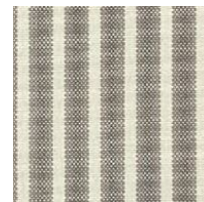
Kokura Stripe (F1) 1032



Kokura Stripe (F1) 1031



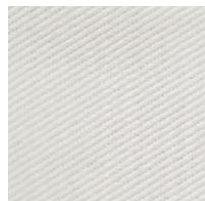
Kokura Stripe (F1) 1030



Kokura Stripe (F1) 1039



Kokura Stripe (F1) 1038



Katsuragi white (F1)



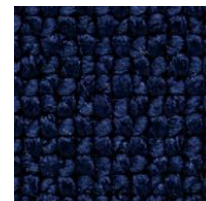
Bolster (F2) 09



Bolster (F2) 75



Bolster (F2) 77



Bolster (F2) 44



Bolster (F2) 80



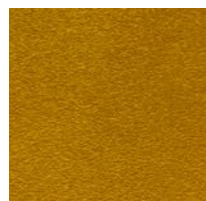
Bolster (F2) 88

Special order

機能性生地や、ラインナップ以外のカラー生地のおオーダーも承ります。



Red



Orange



Yellow



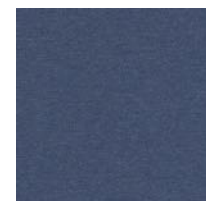
Green



Green 2



Green 3



Blue 1



Blue 2



Blue 3

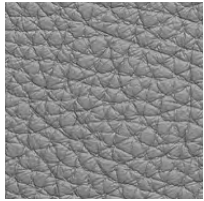
Embossed leather (L1)



40202



40242



40243



40204



40205



40206



40209



40210



40215



40216

Smooth leather (L2)



40110



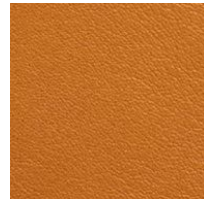
40109



40106



40108



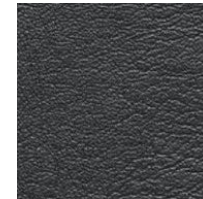
40105



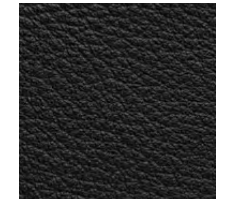
40104



40103



40107



40102



40101