

Diamond back

Designed by Drill Design

A design studio with more than a decade-long experience in research of the Windsor chair, DRILL DESIGN has developed this iconic chair into an elegant lounge chair brimming with a strong presence. By merging the dichotomies of the classic/the modern and calmness/tension, the studio presented a new image of the Windsor chair.

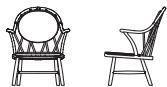
The eight spokes on the backrest are constructed to gently embrace and support the back and waist of the user for a comfortable seating experience. The chair is characterized by the backrest with spokes interlaced into a diamond-shaped pattern, from which its name is derived. The seats of traditional Windsor chairs, made of solid wood, tend to warp over time, but the Diamond back chair adopts a frame structure and fabric upholstery for the seat to prevent warping. Furthermore, it offers comfort and reduced fatigue when sitting for a long period of time, while its lightweight design enhances mobility.

The frame that flows seamlessly from the back to the armrests is called a continuous arm, which is one of the features of traditional Windsor chairs. We recreated the sleek arm from a single solid wood using Japan's sophisticated bentwood technology.



Diamond back

Designed by Drill Design



DD-013 lounge chair

W719 × D695 × H900 × SH386 × AH650

Beech

F1	3.000
F2	3.100
L1	3.200
L2	3.300

TIME & STYLE

W (width)
D (depth)
H (height)
SH (seat height)
AH (arm height)

Dimensions Unit: mm

Prices in Euro
VAT not included

F1 (Fabric rank 1)
F2 (Fabric rank 2)
L1 (Leather rank 1)
L2 (Leather rank 2)



Beech
Natural white



Beech
Charcoal grey

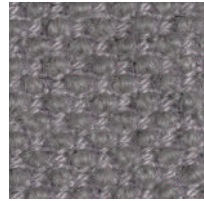
New Fabrics



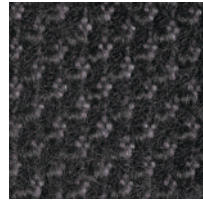
Shizuku (F2) KO1001



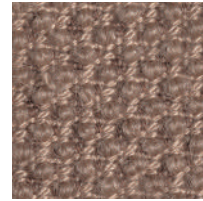
Shizuku (F2) KO1002



Shizuku (F2) KO1003



Shizuku (F2) KO1004



Shizuku (F2) KO1005



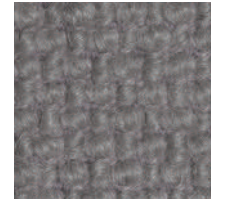
Shizuku (F2) KO1006



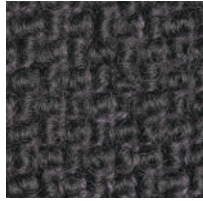
Migiwa (F2) KO2001



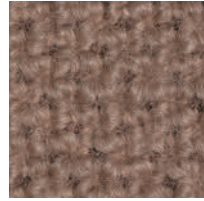
Migiwa (F2) KO2002



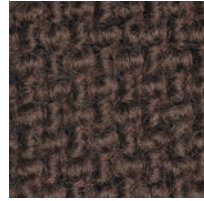
Migiwa (F2) KO2003



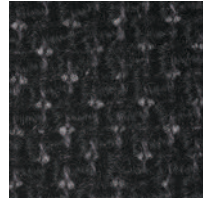
Migiwa (F2) KO2004



Migiwa (F2) KO2005



Migiwa (F2) KO2006



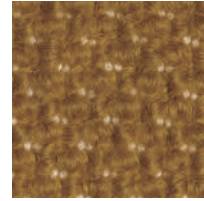
Migiwa (F2) KO2007



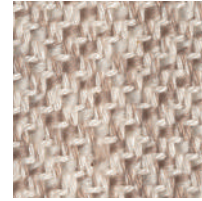
Migiwa (F2) KO2008



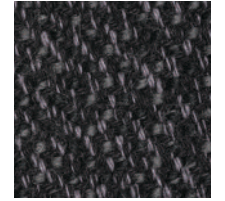
Migiwa (F2) KO2009



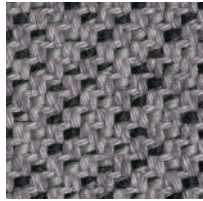
Migiwa (F2) KO2010



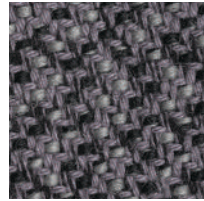
Mikage (F2) KO4001



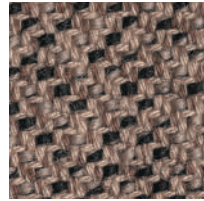
Mikage (F2) KO4002



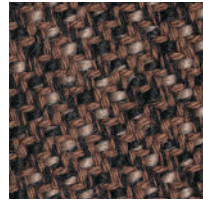
Mikage (F2) KO4003



Mikage (F2) KO4011

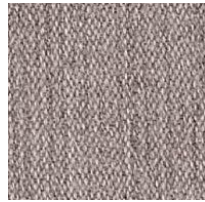


Mikage (F2) KO4005

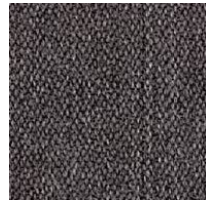


Mikage (F2) KO4006

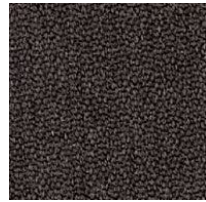
Fabrics



Riff (F1) 13/08



Riff (F1) 12/80



Riff (F1) 07/78



Riff (F1) 05/99



Riff (F1) 06/77



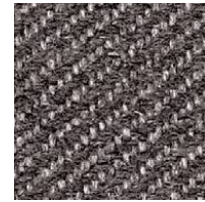
Bergen (F1) 05/09



Bergen (F1) 03/07



Bergen (F1) 10/84



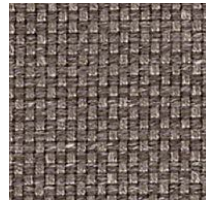
Bergen (F1) 09/86



Bergen (F1) 02/77



Strand (F1) 00



Strand (F1) 75



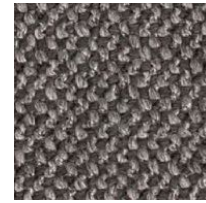
Strand (F1) 77



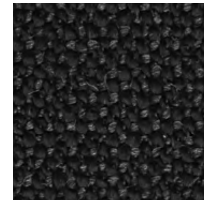
Ruig (F1) 02



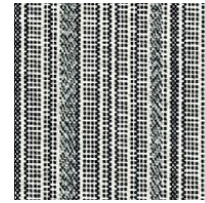
Ruig (F1) 71



Ruig (F1) 78



Ruig (F1) 88



Kokura Stripe(F1) 1037



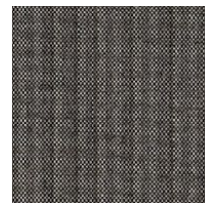
Kokura Stripe (F1) 1036



Kokura Stripe (F1) 1035



Kokura Stripe (F1) 1034



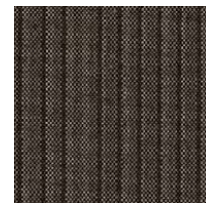
Kokura Stripe (F1) 1033



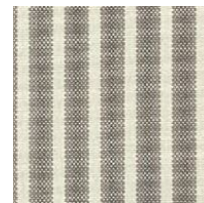
Kokura Stripe (F1) 1032



Kokura Stripe (F1) 1031



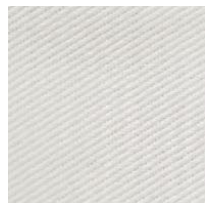
Kokura Stripe (F1) 1030



Kokura Stripe (F1) 1039



Kokura Stripe (F1) 1038



Katsuragi white (F1)



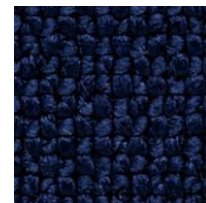
Bolster (F2) 09



Bolster (F2) 75



Bolster (F2) 77



Bolster (F2) 44



Bolster (F2) 80

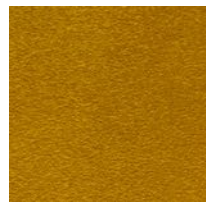


Bolster (F2) 88

Special order



Red



Orange



Yellow



Green



Green 2



Green 3



Blue 1



Blue 2



Blue 3

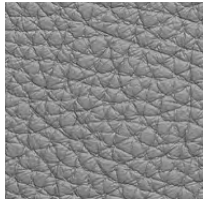
Embossed leather (L1)



40202



40242



40243



40204



40205



40206



40209



40210



40215



40216

Smooth leather (L2)



40110



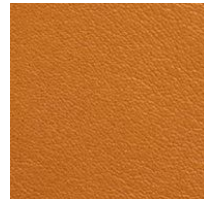
40109



40106



40108



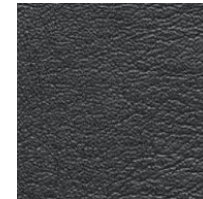
40105



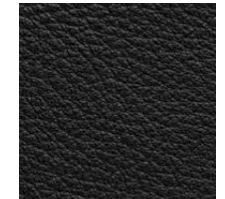
40104



40103



40107



40102



40101