



### Arrow

Comprising parts carved from solid wood, this chair was developed on the concept of a standard chair. Curves that you unconsciously want to touch and complex joints are all precisely carved from natural wood and polished by artisans for an exquisite finish. The stile that is slightly carved to support the back connects seamlessly with the backrest. The backrest has been carved from solid wood to emphasize the wooden expression. The chair's straight-as-an-arrow form and the texture of the wood simultaneously bring a sense of lightness and softness to spaces.

Comprising parts carved from solid wood, this chair was developed on the concept of a standard chair. This is a simple chair with curves and complex joints that you unconsciously want to touch. Those are all precisely carved from natural wood and polished by artisans for an exquisite finish. So that the natural wooden texture does not give a heavy impression, the backrest, seat frame, and armrests have a sharp form that gives a sense of lightness.

## Arrow



I-501 side chair  
W470×D530×H802×SH445

### White ash

F1	1.050
F2	1.100
L1	1.200
L2	1.250



I-502 armchair  
W584×D530×H802×SH445×AH630

### White ash

F1	1.370
F2	1.420
L1	1.520
L2	1.570

## TIME & STYLE

W (width)  
D (depth)  
H (height)  
SH (seat height)  
AH (arm height)

Dimensions Unit: mm

Prices in Euro  
VAT not included

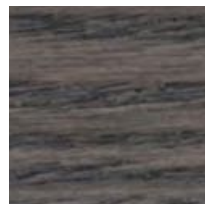
F1 (Fabric rank 1)  
F2 (Fabric rank 2)  
L1 (Leather rank 1)  
L2 (Leather rank 2)



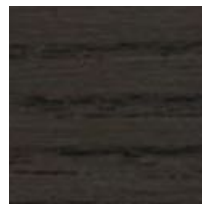
White ash  
Natural white



White ash  
Snow white



White ash  
Medium grey



White ash  
Charcoal grey



White ash  
Soap

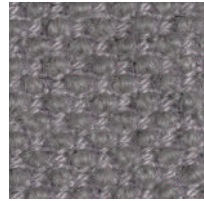
New Fabrics



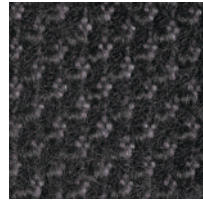
Shizuku (F2) KO1001



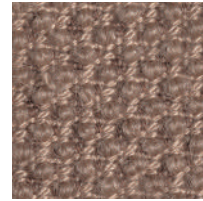
Shizuku (F2) KO1002



Shizuku (F2) KO1003



Shizuku (F2) KO1004



Shizuku (F2) KO1005



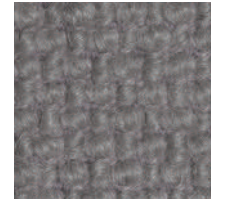
Shizuku (F2) KO1006



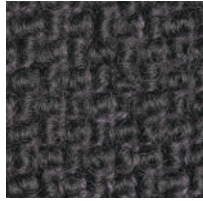
Migiwa (F2) KO2001



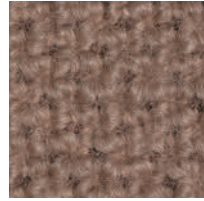
Migiwa (F2) KO2002



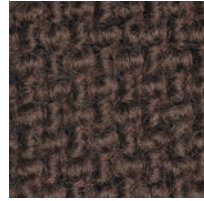
Migiwa (F2) KO2003



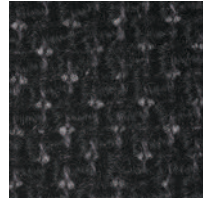
Migiwa (F2) KO2004



Migiwa (F2) KO2005



Migiwa (F2) KO2006



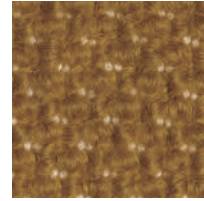
Migiwa (F2) KO2007



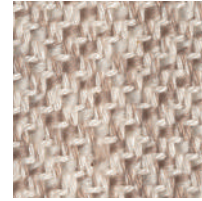
Migiwa (F2) KO2008



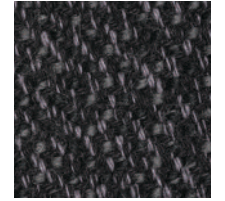
Migiwa (F2) KO2009



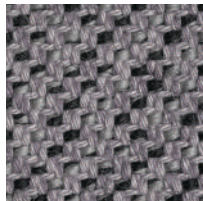
Migiwa (F2) KO2010



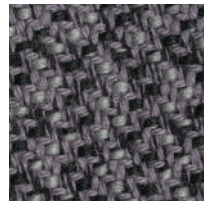
Mikage (F2) KO4001



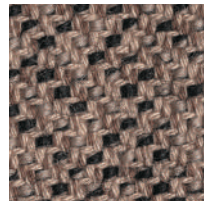
Mikage (F2) KO4002



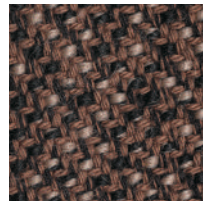
Mikage (F2) KO4003



Mikage (F2) KO4011

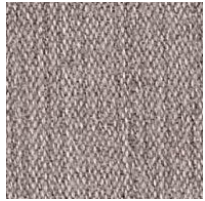


Mikage (F2) KO4005

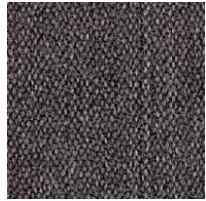


Mikage (F2) KO4006

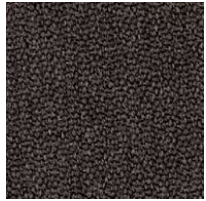
Fabrics



Riff (F1) 13/08



Riff (F1) 12/80



Riff (F1) 07/78



Riff (F1) 05/99



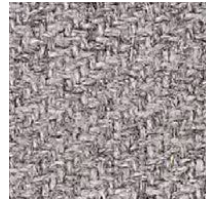
Riff (F1) 06/77



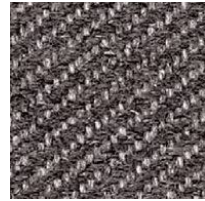
Bergen (F1) 05/09



Bergen (F1) 03/07



Bergen (F1) 10/84



Bergen (F1) 09/86



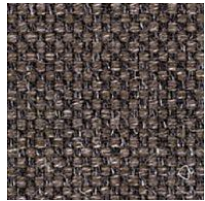
Bergen (F1) 02/77



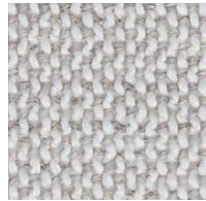
Strand (F1) 00



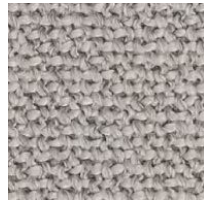
Strand (F1) 75



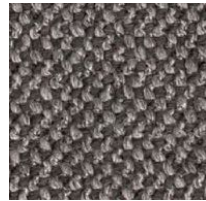
Strand (F1) 77



Ruig (F1) 02



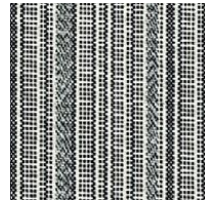
Ruig (F1) 71



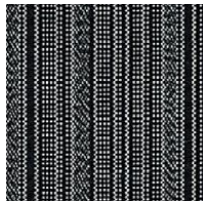
Ruig (F1) 78



Ruig (F1) 88



Kokura Stripe(F1) 1037



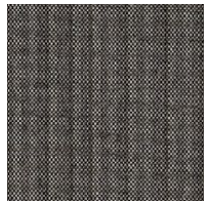
Kokura Stripe (F1) 1036



Kokura Stripe (F1) 1035



Kokura Stripe (F1) 1034



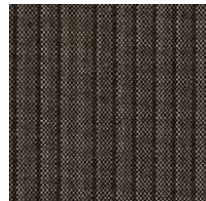
Kokura Stripe (F1) 1033



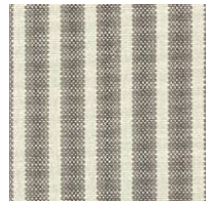
Kokura Stripe (F1) 1032



Kokura Stripe (F1) 1031



Kokura Stripe (F1) 1030



Kokura Stripe (F1) 1039



Kokura Stripe (F1) 1038



Katsuragi white (F1)



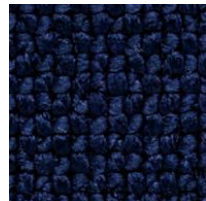
Bolster (F2) 09



Bolster (F2) 75



Bolster (F2) 77



Bolster (F2) 44



Bolster (F2) 80



Bolster (F2) 88

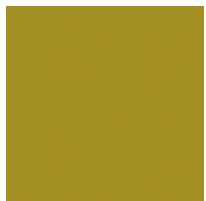
Special order



Red



Orange



Yellow



Green



Green 2



Green 3



Blue 1



Blue 2



Blue 3

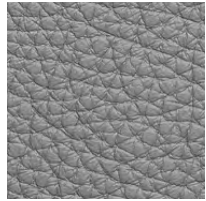
Embossed leather (L1)



40202



40242



40243



40204



40205



40206



40209



40210



40215



40216

Smooth leather (L2)



40110



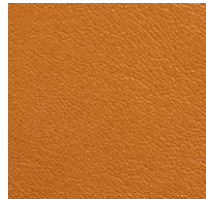
40109



40106



40108



40105



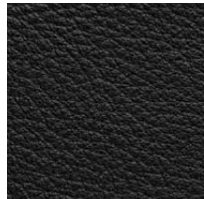
40104



40103



40107



40102



40101