



Kumiko Partition

The Kumiko Partition is based on the Kumiko woodworking technique that originated in the Kamakura period as a fixture technology in Japanese architecture. This technique involves cutting thin pieces of wood, adding grooves and angles, and assembling small wood fragments to create intricate patterns. With a history of over 800 years, there are more than 200 patterns in existence. These patterns hold meanings deeply rooted in Japan's climate and culture, requiring highly skilled craftsmanship down to the finest details. Kumiko has long been cherished as a traditional Japanese decorative partition, allowing light and shadow to pass through.

This partition uses high-quality cedar wood, and the frame is delicately minimized to accentuate the beauty of the Kumiko patterns in a simple design. Particularly distinctive is the foldable section that moves freely on both sides, featuring a corded hinge created without the use of metal fittings.



Kumiko Partition

TIME & STYLE



P-003 partition
W2704×D30×H1200
Mitsukude

9.300



P-013 partition
W2704×D30×H1200
Asanoha

11.900



P-023 partition
W2704×D30×H1200
Goma

15.000



P-033 partition
W2704×D30×H1200
Sayagatakuzushi

9.600



P-043 partition
W2704×D30×H1200
Shippoutsunagi

10.300



P-053 partition
W2704×D30×H1200
Sembongoshi

7.200



P-004 partition
W3606×D30×H1200
Mitsukude

12.300



P-014 partition
W3606×D30×H1200
Asanoha

15.700



P-024 partition
W3606×D30×H1200
Goma

19.800



P-034 partition
W3606×D30×H1200
Sayagatakuzushi

12.700



P-044 partition
W3606×D30×H1200
Shippoutsunagi

13.500



P-054 partition
W3606×D30×H1200
Sembongoshi

9.400

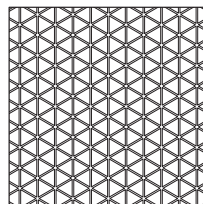
W (width)
D (depth)
H (height)

Dimensions Unit: mm

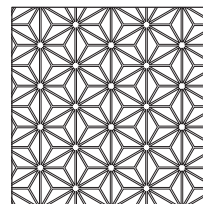
Prices in Euro
VAT not included



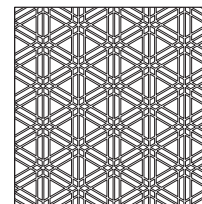
Cedar



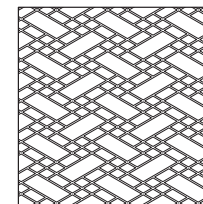
Mitsukude



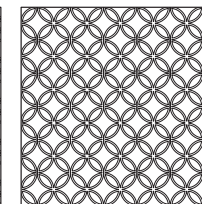
Asanoha



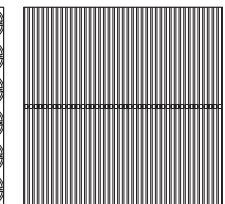
Goma



Sayagatakuzush



Shippoutsunagi



Sembongoshi