



Tanazushi, Tanazushi wall shelf

In the Shosoin of Todai-ji Temple, a wooden shelf is treasured, which is known as Tanazushi. It is the oldest extant piece of Japanese furniture, and the prototype for shelves in Japan. Crafted from solid cedar, the shelf is said to have been used to store instruments and other furnishing goods. The appearance of the shelf, assembled without nails from wooden parts through the wisdom of the craftsmen and the pared-down sensibilities of the Japanese people at a time when saws did not yet exist, conveys an imposing dignity despite the unaffected and simple construction.

This shelved stand references the structures of classical architecture, such as the Todai-ji and Yakushi-ji temples constructed 1300 years ago, and the Horyu-ji temple that is the world's oldest extant wooden structure. We decided to reproduce this shelved stand in the same size and structure as existed back then. With no detailed documentation left behind, we relied on limited literature and photographs and created the item while imagining what the artisans of the past would have thought as they crafted. Recreating this Tanazushi allowed us to make contact with the thoughts of woodworkers of long ago, and led to a renewed appreciation of the technical abilities and the aesthetics of ancient Japanese woodworking.

Tanazushi, Tanazushi wall shelf

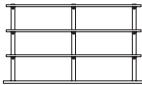
TIME & STYLE



Tanazushi

C-031 shelf
W2490×D668×H960

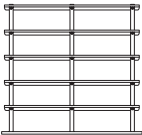
Oak	10.500
Oak _ Tannin black	11.000
Cypress	9.400



Tanazushi

C-032 shelf
W2490×D668×H1405

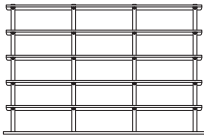
Oak	14.000
Oak _ Tannin black	14.500
Cypress	12.600



Tanazushi wall shelf

C-041 shelf
W2490×D668×H2300

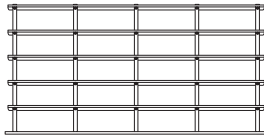
Oak	21.000
Oak _ Tannin black	22.100
Cypress	18.900



Tanazushi wall shelf

C-042 shelf
W3565×D668×H2300

Oak	30.300
Oak _ Tannin black	32.600
Cypress	27.300



Tanazushi wall shelf

C-043 shelf
W4639×D668×H2300

Oak	39.600
Oak _ Tannin black	42.000
Cypress	35.700

W (width)
D (depth)
H (height)

Dimensions Unit: mm

Prices in Euro
VAT not included



Oak
Beeswax



Oak
Tannin black



Cypress