



Serpentine table, Serpentine stool

Serpentine Gallery Pavilion |
London, United Kingdom | 2011

Each year at the Serpentine Gallery in London, a world-renowned architect is invited to install a pavilion during the summer. Peter Zumthor was commissioned to design a pavilion in 2011 and then he also designed the tables and the stools.

The product is not overly decorated, and the production process is an integral part of the design. For example, the edges of the tabletop are bent one by one with spinning technique. It not only ensures safety but also allows the metal table to give a softer impression. The three thin legs are bound together with wire. Thus the table has a simple and clean structure while maintaining its strength.

With a hot-dip galvanized finish, the collection can be used outdoors. It can also be folded up for storage. A vibrating stainless steel finish has also been added as a variant to match the calm indoor atmosphere. The compact combination of the table and stool utilizes the limited space to the max.

Serpentine table, Serpentine stool

Designed by Peter Zumthor



Serpentine table

PZT-001 garden table
ø 420 × W491 × D491 × H720

Galvanized
2.400



Serpentine stool

PZI-001 garden stool
W440 × D368 × H450

Galvanized
Fabric 1.700



Serpentine table

PZT-002 table
ø 420 × W491 × D491 × H720

Vibration
2.800



Serpentine stool

PZI-002 stool
W440 × D368 × H450

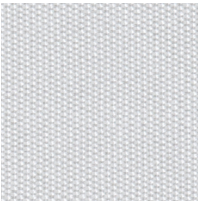
Vibration
Fabric 2.000
Leather 2.300

TIME & STYLE

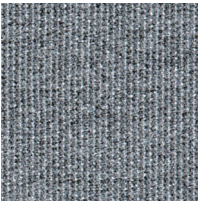
ø (diameter)
W (width)
D (depth)
H (height)

Dimensions Unit: mm

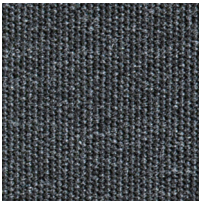
Prices in Euro
VAT not included



Weatherproof fabric / Silver



Weatherproof fabric / Smoke



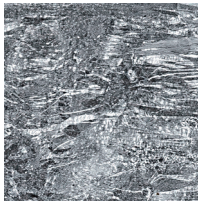
Weatherproof fabric / Slate



Weatherproof fabric / Black



Leather Black



Steel Galvanized finish



Stainless Vibration finish